

Anti-CDC5L antibody (721-770 aa) (STJ92180)

STJ92180

GENERAL INFORMATION

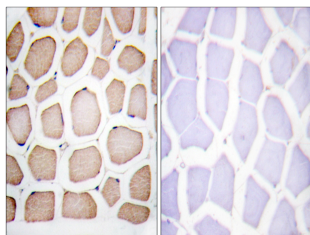
Product Type	Primary antibodies
Short Description	Rabbit polyclonal antibody anti-Cell division cycle 5-like protein (721-770 aa) is suitable for use in Immunohistochemistry, Immunofluorescence and ELISA research applications.
Applications	IHC/IF/ELISA
Host/Source	Rabbit
Reactivity	Human/Mouse/Rat

PRODUCT PROPERTIES

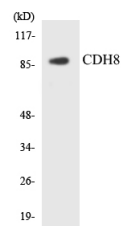
Clonality	Polyclonal
Clone ID	
Concentration	1 mg/mL
Conjugation	Unconjugated
Purification	The antibody was affinity-purified from rabbit antiserum by affinity-chromatography using epitope-specific immunogen.
Dilution Range	IHC 1:100-1:300 ELISA 1:5000 IF 1:50-200
Formulation	Liquid in PBS containing 50% Glycerol, 0.5% BSA and 0.02% Sodium Azide.
Isotype	IgG
Storage Instruction	Store at -20°C for up to 1 year from the date of receipt, and avoid repeat freeze-thaw cycles.

TARGET INFORMATION

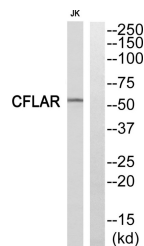
Gene ID	988
Gene Symbol	CDC5L
Uniprot ID	CDC5L_HUMAN
Immunogen	The antiserum was produced against synthesized peptide derived from the human CDC5L at the amino acid range 721-770
Immunogen Region	721-770 aa
Specificity	Cdc5L Polyclonal Antibody detects endogenous levels of Cdc5L protein.
Immunogen Sequence	



Immunohistochemistry analysis of paraffin-embedded human smooth muscle, using CDC5L Antibody. The lane on the right is blocked with the CDC5L peptide.



Western blot analysis of the lysates from HeLa cells using CDH8 antibody.



Western blot analysis of CDC5L Antibody. The lane on the right is blocked with the CDC5L peptide.

This product is suitable for in-vitro studies under the RESEARCH USE ONLY [RUO] licence. This product must not be used as for diagnostic or other medical purposes.
St John's Laboratory Ltd, Knowledge Dock Business Centre, University Way, London, E16 2RD | Tel: 0208 223 3081