

## Anti-TMEM30B antibody (91-140 aa) (STJ92178)

STJ92178

### GENERAL INFORMATION

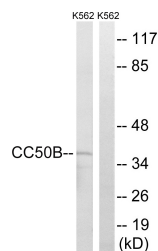
<b>Product Type</b>	Primary antibodies
<b>Short Description</b>	Rabbit polyclonal antibody anti-Cell cycle control protein 50B (91-140 aa) is suitable for use in Western Blot and ELISA research applications.
<b>Applications</b>	WB/ELISA
<b>Host/Source</b>	Rabbit
<b>Reactivity</b>	Human/Mouse

### PRODUCT PROPERTIES

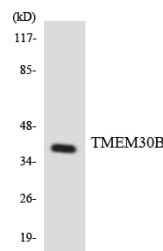
<b>Clonality</b>	Polyclonal
<b>Clone ID</b>	
<b>Concentration</b>	1 mg/mL
<b>Conjugation</b>	Unconjugated
<b>Purification</b>	The antibody was affinity-purified from rabbit antiserum by affinity-chromatography using epitope-specific immunogen.
<b>Dilution Range</b>	WB 1:500-1:2000 ELISA 1:40000
<b>Formulation</b>	Liquid in PBS containing 50% Glycerol, 0.5% BSA and 0.02% Sodium Azide.
<b>Isotype</b>	IgG
<b>Storage Instruction</b>	Store at -20°C for up to 1 year from the date of receipt, and avoid repeat freeze-thaw cycles.

### TARGET INFORMATION

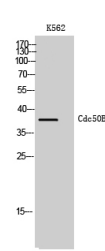
<b>Gene ID</b>	161291
<b>Gene Symbol</b>	TMEM30B
<b>Uniprot ID</b>	CC50B_HUMAN
<b>Immunogen</b>	The antiserum was produced against synthesized peptide derived from the human TMEM30B at the amino acid range 91-140
<b>Immunogen Region</b>	91-140 aa
<b>Specificity</b>	Cdc50B Polyclonal Antibody detects endogenous levels of Cdc50B protein.
<b>Immunogen Sequence</b>	



Western blot analysis of lysates from K562 cells, using TMEM30B Antibody. The lane on the right is blocked with the synthesized peptide.



Western blot analysis of the lysates from HeLa cells using TMEM30B antibody.



Western blot analysis of K562 cells using Cdc50B Polyclonal Antibody

This product is suitable for in-vitro studies under the RESEARCH USE ONLY [RUO] licence. This product must not be used as for diagnostic or other medical purposes.  
St John's Laboratory Ltd, Knowledge Dock Business Centre, University Way, London, E16 2RD | Tel: 0208 223 3081