

Anti-CDC25C antibody (183-232 aa) (STJ92166)

STJ92166

GENERAL INFORMATION

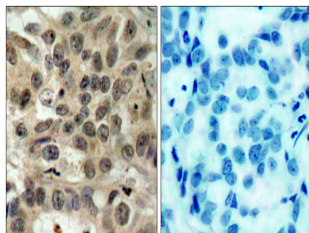
Product Type	Primary antibodies
Short Description	Rabbit polyclonal antibody anti-M-phase inducer phosphatase 3 (183-232 aa) is suitable for use in Western Blot, Immunohistochemistry, Immunofluorescence and ELISA research applications.
Applications	WB/IHC/IF/ELISA
Host/Source	Rabbit
Reactivity	Human/Rat/Mouse

PRODUCT PROPERTIES

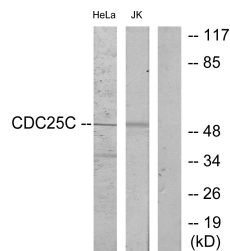
Clonality	Polyclonal
Clone ID	
Concentration	1 mg/mL
Conjugation	Unconjugated
Purification	The antibody was affinity-purified from rabbit antiserum by affinity-chromatography using epitope-specific immunogen.
Dilution Range	WB 1:500-1:2000 IHC 1:100-1:300 ELISA 1:40000 IF 1:50-200
Formulation	Liquid in PBS containing 50% Glycerol, 0.5% BSA and 0.02% Sodium Azide.
Isotype	IgG
Storage	Store at -20°C for up to 1 year from the date of receipt, and avoid repeat freeze-thaw cycles.
Instruction	

TARGET INFORMATION

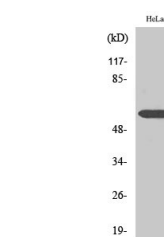
Gene ID	995
Gene Symbol	CDC25C
Uniprot ID	MPIP3_HUMAN
Immunogen	The antiserum was produced against synthesized peptide derived from the human CDC25C at the amino acid range 183-232
Immunogen	183-232 aa
Region	
Specificity	Cdc25C Polyclonal Antibody detects endogenous levels of Cdc25C protein.
Immunogen	
Sequence	



Immunohistochemistry analysis of paraffin-embedded human breast carcinoma tissue, using CDC25C Antibody. The picture on the right is blocked with the synthesized peptide.



Western blot analysis of lysates from HeLa and Jurkat cells, using CDC25C Antibody. The lane on the right is blocked with the synthesized peptide.



Western blot analysis of various cells using Cdc25C Polyclonal Antibody