

Anti-CD79A antibody (141-190 aa) (STJ92142)

STJ92142

GENERAL INFORMATION

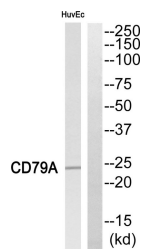
Product Type	Primary antibodies
Short Description	Rabbit polyclonal antibody anti-B-cell antigen receptor complex-associated protein alpha chain (141-190 aa) is suitable for use in Western Blot, Immunohistochemistry, Immunofluorescence and ELISA research applications.
Applications	WB/IHC/IF/ELISA
Host/Source	Rabbit
Reactivity	Human/Rat/Mouse

PRODUCT PROPERTIES

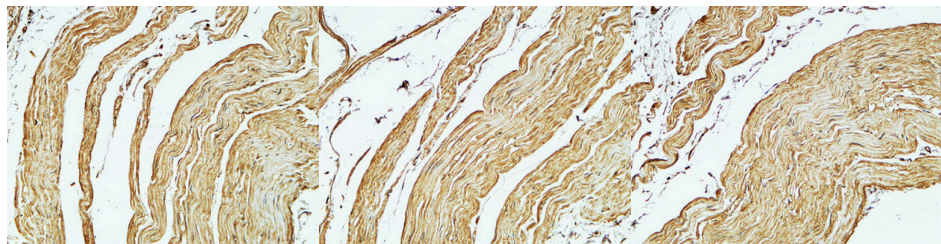
Clonality	Polyclonal
Clone ID	
Concentration	1 mg/mL
Conjugation	Unconjugated
Purification	The antibody was affinity-purified from rabbit antiserum by affinity-chromatography using epitope-specific immunogen.
Dilution	IHC-P 100-300
Range	WB 1:500-1:2000 ELISA 1:20000 IF 1:50-200
Formulation	Liquid in PBS containing 50% Glycerol, 0.5% BSA and 0.02% Sodium Azide.
Isotype	IgG
Storage	Store at -20°C for up to 1 year from the date of receipt, and avoid repeat freeze-thaw cycles.
Instruction	

TARGET INFORMATION

Gene ID	973
Gene Symbol	CD79A
Uniprot ID	CD79A_HUMAN
Immunogen	The antiserum was produced against synthesized peptide derived from the human CD79A at the amino acid range 141-190
Immunogen Region	141-190 aa
Specificity	CD79a Polyclonal Antibody detects endogenous levels of CD79a protein.
Immunogen Sequence	



Western blot analysis of CD79A Antibody. The lane on the right is blocked with the CD79A peptide.



Immunohistochemical analysis of paraffin-embedded Human stomach. 1. Antibody was diluted at 1:400 (4A°C overnight). 2. High-pressure and temperature EDTA, pH8.0 was used for antigen retrieval. 3. Secondary antibody was diluted at 1:200 (room temperature, 30min).

Immunohistochemical analysis of paraffin-embedded Human stomach. 1. Antibody was diluted at 1:400 (4A°C overnight). 2. High-pressure and temperature EDTA, pH8.0 was used for antigen retrieval. 3. Secondary antibody was diluted at 1:200 (room temperature, 30min).

Immunohistochemical analysis of paraffin-embedded Human stomach. 1. Antibody was diluted at 1:400 (4A°C overnight). 2. High-pressure and temperature EDTA, pH8.0 was used for antigen retrieval. 3. Secondary antibody was diluted at 1:200 (room temperature, 30min).

This product is suitable for in-vitro studies under the RESEARCH USE ONLY [RUO] licence. This product must not be used as for diagnostic or other medical purposes.
St John's Laboratory Ltd, Knowledge Dock Business Centre, University Way, London, E16 2RD | Tel: 0208 223 3081