

Anti-ST6GAL1 antibody (171-220 aa) (STJ92141)

STJ92141

GENERAL INFORMATION

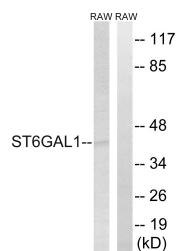
Product Type	Primary antibodies
Short Description	Rabbit polyclonal antibody anti-Beta-galactoside alpha-2, 6-sialyltransferase 1 (171-220 aa) is suitable for use in Western Blot, Immunohistochemistry, Immunofluorescence and ELISA research applications.
Applications	WB/IHC/IF/ELISA
Host/Source	Rabbit
Reactivity	Human/Mouse/Rat

PRODUCT PROPERTIES

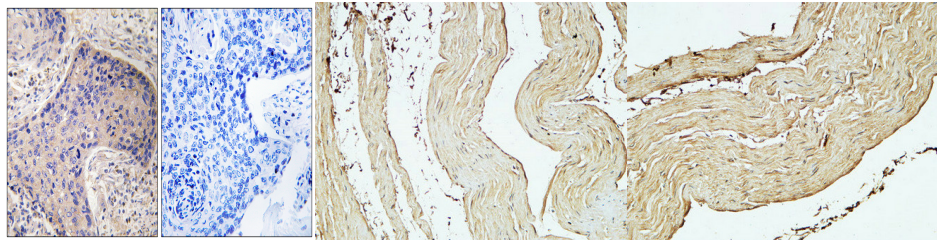
Clonality	Polyclonal
Clone ID	
Concentration	1 mg/mL
Conjugation	Unconjugated
Purification	The antibody was affinity-purified from rabbit antiserum by affinity-chromatography using epitope-specific immunogen.
Dilution	WB 1:500-1:2000
Range	IHC 1:100-1:300 ELISA 1:40000 IF 1:50-200
Formulation	Liquid in PBS containing 50% Glycerol, 0.5% BSA and 0.02% Sodium Azide.
Isotype	IgG
Storage Instruction	Store at -20°C for up to 1 year from the date of receipt, and avoid repeat freeze-thaw cycles.

TARGET INFORMATION

Gene ID	6480
Gene Symbol	ST6GAL1
Uniprot ID	SIAT1_HUMAN
Immunogen	The antiserum was produced against synthesized peptide derived from the human ST6GAL1 at the amino acid range 171-220
Immunogen Region	171-220 aa
Specificity	CD75 Polyclonal Antibody detects endogenous levels of CD75 protein.
Immunogen Sequence	



Western blot analysis of lysates from RAW264.7 cells, using ST6GAL1 Antibody. The lane on the right is blocked with the synthesized peptide.



Immunohistochemistry analysis of paraffin-embedded human prostate carcinoma tissue, using ST6GAL1 Antibody. The picture on the right is blocked with the synthesized peptide.

Immunohistochemical analysis of paraffin-embedded Human stomach. 1. Antibody was diluted at 1:200 (44°C overnight). 2. High-pressure and temperature EDTA, pH8.0 was used for antigen retrieval. 3. Secondary antibody was diluted at 1:200 (room temperature, 30min).

Immunohistochemical analysis of paraffin-embedded Human stomach. 1. Antibody was diluted at 1:200 (44°C overnight). 2. High-pressure and temperature EDTA, pH8.0 was used for antigen retrieval. 3. Secondary antibody was diluted at 1:200 (room temperature, 30min).

This product is suitable for in-vitro studies under the RESEARCH USE ONLY [RUO] licence. This product must not be used as for diagnostic or other medical purposes.
St John's Laboratory Ltd, Knowledge Dock Business Centre, University Way, London, E16 2RD | Tel: 0208 223 3081