

Anti-CD5 antibody (421-470 aa) (STJ92131)

STJ92131

GENERAL INFORMATION

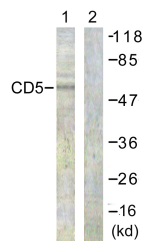
Product Type	Primary antibodies
Short Description	Rabbit polyclonal antibody anti-T-cell surface glycoprotein CD5 (421-470 aa) is suitable for use in Western Blot and ELISA research applications.
Applications	WB/ELISA
Host/Source	Rabbit
Reactivity	Human/Mouse/Rat

PRODUCT PROPERTIES

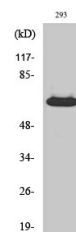
Clonality	Polyclonal
Clone ID	
Concentration	1 mg/mL
Conjugation	Unconjugated
Purification	The antibody was affinity-purified from rabbit antiserum by affinity-chromatography using epitope-specific immunogen.
Dilution Range	WB 1:500-1:2000 ELISA 1:20000
Formulation	Liquid in PBS containing 50% Glycerol, 0.5% BSA and 0.02% Sodium Azide.
Isotype	IgG
Storage Instruction	Store at -20°C for up to 1 year from the date of receipt, and avoid repeat freeze-thaw cycles.

TARGET INFORMATION

Gene ID	921
Gene Symbol	CD5
Uniprot ID	CD5_HUMAN
Immunogen	The antiserum was produced against synthesized peptide derived from the human CD5 at the amino acid range 421-470
Immunogen Region	421-470 aa
Specificity	CD5 Polyclonal Antibody detects endogenous levels of CD5 protein.
Immunogen Sequence	



Western blot analysis of lysates from 293 cells, treated with PMA 125ng/ml 30', using CD5 Antibody. The lane on the right is blocked with the synthesized peptide.



Western blot analysis of various cells using CD5 Polyclonal Antibody.

This product is suitable for in-vitro studies under the RESEARCH USE ONLY [RUO] licence. This product must not be used as for diagnostic or other medical purposes.
St John's Laboratory Ltd, Knowledge Dock Business Centre, University Way, London, E16 2RD | Tel: 0208 223 3081