

Anti-CD34 antibody (208-257 aa) (STJ92122)

STJ92122

GENERAL INFORMATION

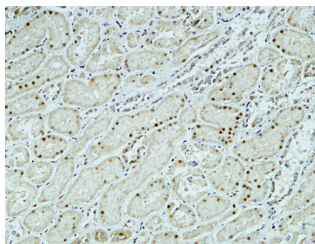
| | |
|--------------------------|--|
| Product Type | Primary antibodies |
| Short Description | Rabbit polyclonal antibody anti-Hematopoietic progenitor cell antigen CD34 (208-257 aa) is suitable for use in Western Blot, Immunohistochemistry, Immunofluorescence and ELISA research applications. |
| Applications | WB/IHC/IF/ELISA |
| Host/Source | Rabbit |
| Reactivity | Human/Mouse |

PRODUCT PROPERTIES

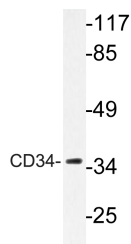
| | |
|----------------------------|---|
| Clonality | Polyclonal |
| Clone ID | |
| Concentration | 1 mg/mL |
| Conjugation | Unconjugated |
| Purification | The antibody was affinity-purified from rabbit antiserum by affinity-chromatography using epitope-specific immunogen. |
| Dilution Range | WB 1:500-2000 IHC-P 1:100-500 IF ICC 1:100-500 ELISA 1:5000-20000 |
| Formulation | Liquid in PBS containing 50% Glycerol, 0.5% BSA and 0.02% Sodium Azide. |
| Isotype | IgG |
| Storage Instruction | Store at -20°C for up to 1 year from the date of receipt, and avoid repeat freeze-thaw cycles. |

TARGET INFORMATION

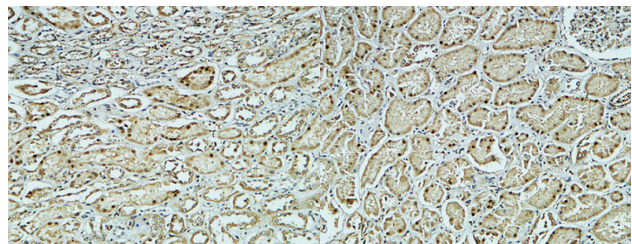
| | |
|---------------------------|--|
| Gene ID | 947 |
| Gene Symbol | CD34 |
| Uniprot ID | CD34_HUMAN |
| Immunogen | The antiserum was produced against synthesized peptide derived from the human CD34 at the amino acid range 208-257 |
| Immunogen Region | 208-257 aa |
| Specificity | CD34 Polyclonal Antibody detects endogenous levels of CD34 protein. |
| Immunogen Sequence | |



Immunohistochemical analysis of paraffin-embedded Human kidney. 1. Antibody was diluted at 1:200 (4A°C overnight). 2. High-pressure and temperature EDTA, pH8.0 was used for antigen retrieval. 3. Secondary antibody was diluted at 1:200 (room temperature, 30min).



Western blot analysis of lysate from HepG2 cells, using CD34 antibody.



Immunohistochemical analysis of paraffin-embedded Human kidney. 1. Antibody was diluted at 1:200 (4A°C overnight). 2. High-pressure and temperature EDTA, pH8.0 was used for antigen retrieval. 3. Secondary antibody was diluted at 1:200 (room temperature, 30min).

Immunohistochemical analysis of paraffin-embedded Human kidney. 1. Antibody was diluted at 1:200 (4A°C overnight). 2. High-pressure and temperature EDTA, pH8.0 was used for antigen retrieval. 3. Secondary antibody was diluted at 1:200 (room temperature, 30min).

This product is suitable for in-vitro studies under the RESEARCH USE ONLY [RUO] licence. This product must not be used as for diagnostic or other medical purposes.
St John's Laboratory Ltd, Knowledge Dock Business Centre, University Way, London, E16 2RD | Tel: 0208 223 3081