

Anti-FCGR2C antibody (251-300 aa) (STJ92121)

STJ92121

GENERAL INFORMATION

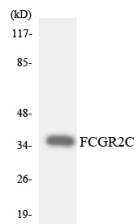
Product Type	Primary antibodies
Short Description	Rabbit polyclonal antibody anti-Low affinity immunoglobulin gamma Fc region receptor II-c (251-300 aa) is suitable for use in Western Blot and ELISA research applications.
Applications	WB/ELISA
Host/Source	Rabbit
Reactivity	Human/Rat/Mouse

PRODUCT PROPERTIES

Clonality	Polyclonal
Clone ID	
Concentration	1 mg/mL
Conjugation	Unconjugated
Purification	The antibody was affinity-purified from rabbit antiserum by affinity-chromatography using epitope-specific immunogen.
Dilution Range	WB 1:500-1:2000 ELISA 1:40000
Formulation	Liquid in PBS containing 50% Glycerol, 0.5% BSA and 0.02% Sodium Azide.
Isotype	IgG
Storage	Store at -20°C for up to 1 year from the date of receipt, and avoid repeat freeze-thaw cycles.
Instruction	

TARGET INFORMATION

Gene ID	9103
Gene Symbol	FCGR2C
Uniprot ID	FCG2C_HUMAN
Immunogen	The antiserum was produced against synthesized peptide derived from the human FCGR2C at the amino acid range 251-300
Immunogen Region	251-300 aa
Specificity	CD32-C Polyclonal Antibody detects endogenous levels of CD32-C protein.
Immunogen Sequence	



Western blot analysis of the lysates from HeLa cells using FCGR2C antibody.

This product is suitable for in-vitro studies under the RESEARCH USE ONLY [RUO] licence. This product must not be used as for diagnostic or other medical purposes.
St John's Laboratory Ltd, Knowledge Dock Business Centre, University Way, London, E16 2RD | Tel: 0208 223 3081