

Anti-KLRK1 antibody (111-160 aa) (STJ92118)

STJ92118

GENERAL INFORMATION

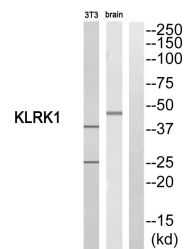
Product Type	Primary antibodies
Short Description	Rabbit polyclonal antibody anti-NKG2-D type II integral membrane protein (111-160 aa) is suitable for use in Western Blot and ELISA research applications.
Applications	WB/ELISA
Host/Source	Rabbit
Reactivity	Human/Rat/Mouse

PRODUCT PROPERTIES

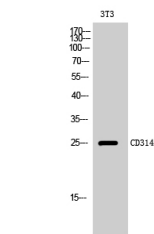
Clonality	Polyclonal
Clone ID	
Concentration	1 mg/mL
Conjugation	Unconjugated
Purification	The antibody was affinity-purified from rabbit antiserum by affinity-chromatography using epitope-specific immunogen.
Dilution Range	WB 1:500-1:2000 ELISA 1:10000
Formulation	Liquid in PBS containing 50% Glycerol, 0.5% BSA and 0.02% Sodium Azide.
Isotype	IgG
Storage	Store at -20°C for up to 1 year from the date of receipt, and avoid repeat freeze-thaw cycles.
Instruction	

TARGET INFORMATION

Gene ID	100528032/22914
Gene Symbol	KLRK1
Uniprot ID	NKG2D_HUMAN
Immunogen	The antiserum was produced against synthesized peptide derived from the human KLRK1 at the amino acid range 111-160
Immunogen Region	111-160 aa
Specificity	CD314 Polyclonal Antibody detects endogenous levels of CD314 protein.
Immunogen Sequence	



Western blot analysis of KLRK1 Antibody. The lane on the right is blocked with the KLRK1 peptide.



Western blot analysis of 3T3 cells using CD314 Polyclonal Antibody

This product is suitable for in-vitro studies under the RESEARCH USE ONLY [RUO] licence. This product must not be used as for diagnostic or other medical purposes.
St John's Laboratory Ltd, Knowledge Dock Business Centre, University Way, London, E16 2RD | Tel: 0208 223 3081