

Anti-TLR4 antibody (392-441 aa) (STJ92109)

STJ92109

GENERAL INFORMATION

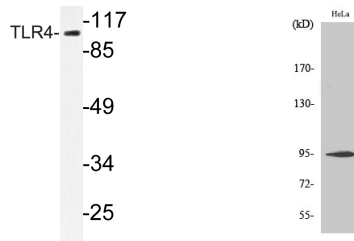
Product Type	Primary antibodies
Short Description	Rabbit polyclonal antibody anti-Toll-like receptor 4 (392-441 aa) is suitable for use in Immunofluorescence, Western Blot, Immunohistochemistry and ELISA research applications.
Applications	IF/WB/IHC/ELISA
Host/Source	Rabbit
Reactivity	Human/Mouse

PRODUCT PROPERTIES

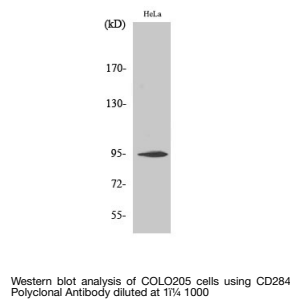
Clonality	Polyclonal
Clone ID	
Concentration	1 mg/mL
Conjugation	Unconjugated
Purification	The antibody was affinity-purified from rabbit antiserum by affinity-chromatography using epitope-specific immunogen.
Dilution Range	IF 1:50-200 WB 1:500-1:2000 IHC 1:100-1:300 ELISA 1:40000
Formulation	Liquid in PBS containing 50% Glycerol, 0.5% BSA and 0.02% Sodium Azide.
Isotype	IgG
Storage Instruction	Store at -20°C for up to 1 year from the date of receipt, and avoid repeat freeze-thaw cycles.

TARGET INFORMATION

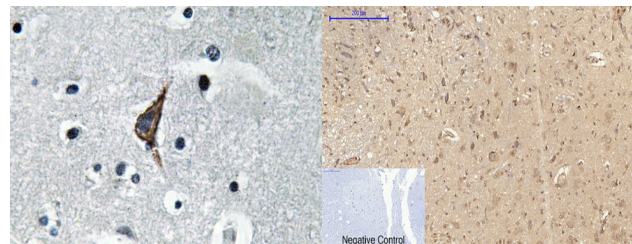
Gene ID	7099
Gene Symbol	TLR4
Uniprot ID	TLR4_HUMAN
Immunogen	The antiserum was produced against synthesized peptide derived from the human CD284 at the amino acid range 392-441
Immunogen	392-441 aa
Region	
Specificity	CD284 Polyclonal Antibody detects endogenous levels of CD284 protein.
Immunogen Sequence	



Western blot analysis of lysate from HeLa cells, using TLR4 antibody.



Western blot analysis of COLO205 cells using CD284 Polyclonal Antibody diluted at 1:1000



Immunohistochemistry analysis of TLR4 antibody in paraffin-embedded human brain tissue.

Immunohistochemical analysis of paraffin-embedded Rat-spinal-cord tissue. 1. CD284 Polyclonal Antibody was diluted at 1:200 (4h, overnight). 2. Sodium citrate pH 6.0 was used for antibody retrieval (>98h, 20min). 3. Secondary antibody was diluted at 1:200 (room temperature, 30min). Negative control was used by secondary antibody only.