

## Anti-CD24 antibody (14-63 aa) (STJ92106)

STJ92106

### GENERAL INFORMATION

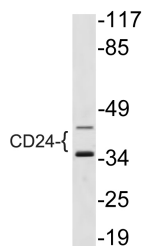
<b>Product Type</b>	Primary antibodies
<b>Short Description</b>	Rabbit polyclonal antibody anti-Signal transducer CD24 (14-63 aa) is suitable for use in Western Blot and ELISA research applications.
<b>Applications</b>	WB/ELISA
<b>Host/Source</b>	Rabbit
<b>Reactivity</b>	Human/Mouse/Rat

### PRODUCT PROPERTIES

<b>Clonality</b>	Polyclonal
<b>Clone ID</b>	
<b>Concentration</b>	1 mg/mL
<b>Conjugation</b>	Unconjugated
<b>Purification</b>	The antibody was affinity-purified from rabbit antiserum by affinity-chromatography using epitope-specific immunogen.
<b>Dilution Range</b>	WB 1:500-1:2000 ELISA 1:10000
<b>Formulation</b>	Liquid in PBS containing 50% Glycerol, 0.5% BSA and 0.02% Sodium Azide.
<b>Isotype</b>	IgG
<b>Storage Instruction</b>	Store at -20°C for up to 1 year from the date of receipt, and avoid repeat freeze-thaw cycles.

### TARGET INFORMATION

<b>Gene ID</b>	100133941
<b>Gene Symbol</b>	CD24
<b>Uniprot ID</b>	CD24_HUMAN
<b>Immunogen</b>	The antiserum was produced against synthesized peptide derived from the human CD24 at the amino acid range 14-63
<b>Immunogen Region</b>	14-63 aa
<b>Specificity</b>	CD24 Polyclonal Antibody detects endogenous levels of CD24 protein.
<b>Immunogen Sequence</b>	



Western blot analysis of lysate from NIH/3T3 cells, using CD24 antibody.