

Anti-BEND4 antibody (371-420 aa) (STJ92068)

STJ92068

GENERAL INFORMATION

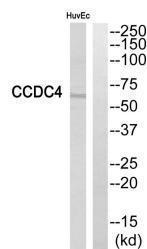
Product Type	Primary antibodies
Short Description	Rabbit polyclonal antibody anti-BEN domain-containing protein 4 (371-420 aa) is suitable for use in Western Blot and ELISA research applications.
Applications	WB/ELISA
Host/Source	Rabbit
Reactivity	Human/Rat/Mouse

PRODUCT PROPERTIES

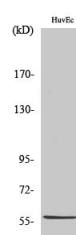
Clonality	Polyclonal
Clone ID	
Concentration	1 mg/mL
Conjugation	Unconjugated
Purification	The antibody was affinity-purified from rabbit antiserum by affinity-chromatography using epitope-specific immunogen.
Dilution Range	WB 1:500-1:2000 ELISA 1:40000
Formulation	Liquid in PBS containing 50% Glycerol, 0.5% BSA and 0.02% Sodium Azide.
Isotype	IgG
Storage Instruction	Store at -20°C for up to 1 year from the date of receipt, and avoid repeat freeze-thaw cycles.

TARGET INFORMATION

Gene ID	389206
Gene Symbol	BEND4
Uniprot ID	BEND4_HUMAN
Immunogen	The antiserum was produced against synthesized peptide derived from the human BEND4 at the amino acid range 371-420
Immunogen Region	371-420 aa
Specificity	CCDC4 Polyclonal Antibody detects endogenous levels of CCDC4 protein.
Immunogen Sequence	



Western blot analysis of BEND4 Antibody. The lane on the right is blocked with the BEND4 peptide.



Western blot analysis of various cells using CCDC4 Polyclonal Antibody.

This product is suitable for in-vitro studies under the RESEARCH USE ONLY [RUO] licence. This product must not be used as for diagnostic or other medical purposes.
St John's Laboratory Ltd, Knowledge Dock Business Centre, University Way, London, E16 2RD | Tel: 0208 223 3081