

## Anti-NCBP2 antibody (10-59 aa) (STJ92061)

STJ92061

### GENERAL INFORMATION

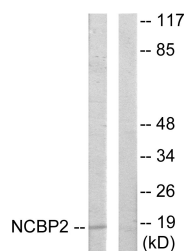
<b>Product Type</b>	Primary antibodies
<b>Short Description</b>	Rabbit polyclonal antibody anti-Nuclear cap-binding protein subunit 2 (10-59 aa) is suitable for use in Western Blot, Immunohistochemistry, Immunofluorescence and ELISA research applications.
<b>Applications</b>	WB/IHC/IF/ELISA
<b>Host/Source</b>	Rabbit
<b>Reactivity</b>	Human/Mouse

### PRODUCT PROPERTIES

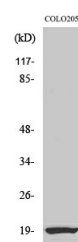
<b>Clonality</b>	Polyclonal
<b>Clone ID</b>	
<b>Concentration</b>	1 mg/mL
<b>Conjugation</b>	Unconjugated
<b>Purification</b>	The antibody was affinity-purified from rabbit antiserum by affinity-chromatography using epitope-specific immunogen.
<b>Dilution Range</b>	WB 1:500-1:2000 IHC 1:100-1:300 IF 1:200-1:1000 ELISA 1:5000
<b>Formulation</b>	Liquid in PBS containing 50% Glycerol, 0.5% BSA and 0.02% Sodium Azide.
<b>Isotype</b>	IgG
<b>Storage Instruction</b>	Store at -20°C for up to 1 year from the date of receipt, and avoid repeat freeze-thaw cycles.

### TARGET INFORMATION

<b>Gene ID</b>	<a href="#">22916</a>
<b>Gene Symbol</b>	<a href="#">NCBP2</a>
<b>Uniprot ID</b>	<a href="#">NCBP2_HUMAN</a>
<b>Immunogen</b>	The antiserum was produced against synthesized peptide derived from the human NCBP2 at the amino acid range 10-59
<b>Immunogen Region</b>	10-59 aa
<b>Specificity</b>	CBP20 Polyclonal Antibody detects endogenous levels of CBP20 protein.
<b>Immunogen Sequence</b>	



Western blot analysis of lysates from COLO205 cells, using NCBP2 Antibody. The lane on the right is blocked with the synthesized peptide.



Western blot analysis of various cells using CBP20 Polyclonal Antibody