

## Anti-JUP antibody (696-745 aa) (STJ92043)

STJ92043

### GENERAL INFORMATION

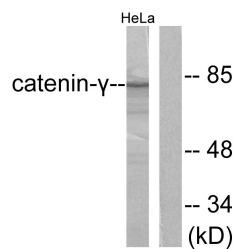
<b>Product Type</b>	Primary antibodies
<b>Short Description</b>	Rabbit polyclonal antibody anti-Junction plakoglobin (696-745 aa) is suitable for use in Western Blot, Immunohistochemistry, Immunofluorescence and ELISA research applications.
<b>Applications</b>	WB/IHC/IF/ELISA
<b>Host/Source</b>	Rabbit
<b>Reactivity</b>	Human/Mouse/Rat

### PRODUCT PROPERTIES

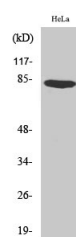
<b>Clonality</b>	Polyclonal
<b>Clone ID</b>	
<b>Concentration</b>	1 mg/mL
<b>Conjugation</b>	Unconjugated
<b>Purification</b>	The antibody was affinity-purified from rabbit antiserum by affinity-chromatography using epitope-specific immunogen.
<b>Dilution Range</b>	WB 1:500-1:2000 IHC 1:100-1:300 IF 1:200-1:1000 ELISA 1:20000
<b>Formulation</b>	Liquid in PBS containing 50% Glycerol, 0.5% BSA and 0.02% Sodium Azide.
<b>Isotype</b>	IgG
<b>Storage Instruction</b>	Store at -20°C for up to 1 year from the date of receipt, and avoid repeat freeze-thaw cycles.

### TARGET INFORMATION

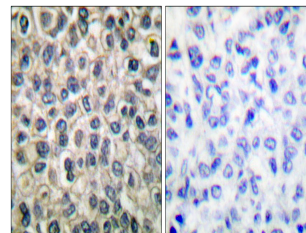
<b>Gene ID</b>	3728
<b>Gene Symbol</b>	JUP
<b>Uniprot ID</b>	PLAK_HUMAN
<b>Immunogen</b>	The antiserum was produced against synthesized peptide derived from the human Catenin-gamma at the amino acid range 696-745
<b>Immunogen Region</b>	696-745 aa
<b>Specificity</b>	Catenin-Gamma Polyclonal Antibody detects endogenous levels of Catenin-Gamma protein.
<b>Immunogen Sequence</b>	



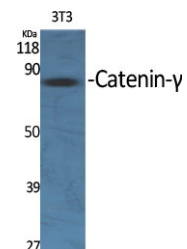
Western blot analysis of lysates from HeLa cells, using Catenin-gamma Antibody. The lane on the right is blocked with the synthesized peptide.



Western blot analysis of HeLa cells using Catenin-Gamma Polyclonal Antibody diluted at 1:1000



Immunohistochemistry analysis of paraffin-embedded human breast carcinoma tissue, using Catenin-gamma Antibody. The picture on the right is blocked with the synthesized peptide.



Western blot analysis of various cells using Catenin-Gamma Polyclonal Antibody diluted at 1:1000