

Anti-CASP12 antibody (50-99 aa) (STJ92019)

STJ92019

GENERAL INFORMATION

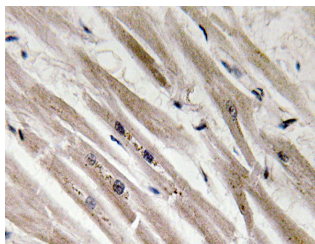
Product Type	Primary antibodies
Short Description	Rabbit polyclonal antibody anti-Inactive caspase-12 (50-99 aa) is suitable for use in Western Blot, Immunohistochemistry, Immunofluorescence and ELISA research applications.
Applications	WB/IHC/IF/ELISA
Host/Source	Rabbit
Reactivity	Human/Rat/Mouse

PRODUCT PROPERTIES

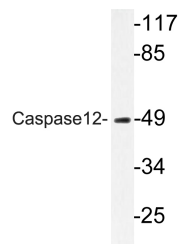
Clonality	Polyclonal
Clone ID	
Concentration	1 mg/mL
Conjugation	Unconjugated
Purification	The antibody was affinity-purified from rabbit antiserum by affinity-chromatography using epitope-specific immunogen.
Dilution Range	WB 1:500-1:2000 IHC 1:100-1:300 ELISA 1:40000 IF 1:50-200
Formulation	Liquid in PBS containing 50% Glycerol, 0.5% BSA and 0.02% Sodium Azide.
Isotype	IgG
Storage Instruction	Store at -20°C for up to 1 year from the date of receipt, and avoid repeat freeze-thaw cycles.

TARGET INFORMATION

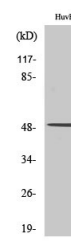
Gene ID	100506742
Gene Symbol	CASP12
Uniprot ID	CASPC_HUMAN
Immunogen	The antiserum was produced against synthesized peptide derived from the human Caspase12 at the amino acid range 50-99
Immunogen Region	50-99 aa
Specificity	Caspase12 Polyclonal Antibody detects endogenous levels of Caspase12 protein.
Immunogen Sequence	



Immunohistochemistry analysis of Caspase12 antibody in paraffin-embedded human heart tissue.



Western blot analysis of lysate from HUVEC cells, using Caspase12 antibody.



Western blot analysis of various cells using Caspase12 Polyclonal Antibody diluted at 1/4 500

This product is suitable for in-vitro studies under the RESEARCH USE ONLY [RUO] licence. This product must not be used as for diagnostic or other medical purposes.
St John's Laboratory Ltd, Knowledge Dock Business Centre, University Way, London, E16 2RD | Tel: 0208 223 3081