

Anti-Caspase-10 B/C antibody (430-479 aa) (STJ92018)

STJ92018

GENERAL INFORMATION

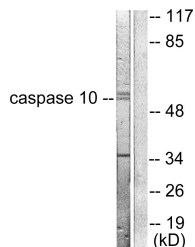
Product Type	Primary antibodies
Short Description	Rabbit polyclonal antibody anti-Caspase-10 and (430-479 aa) is suitable for use in Western Blot, Immunohistochemistry, Immunofluorescence and ELISA research applications.
Applications	WB/IHC/IF/ELISA
Host/Source	Rabbit
Reactivity	Human/Rat/Mouse

PRODUCT PROPERTIES

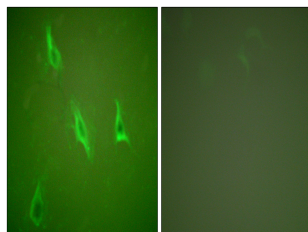
Clonality	Polyclonal
Clone ID	
Concentration	1 mg/mL
Conjugation	Unconjugated
Purification	The antibody was affinity-purified from rabbit antiserum by affinity-chromatography using epitope-specific immunogen.
Dilution Range	WB 1:500-1:2000 IHC 1:100-1:300 IF 1:200-1:1000 ELISA 1:10000
Formulation	Liquid in PBS containing 50% Glycerol, 0.5% BSA and 0.02% Sodium Azide.
Isotype	IgG
Storage Instruction	Store at -20°C for up to 1 year from the date of receipt, and avoid repeat freeze-thaw cycles.

TARGET INFORMATION

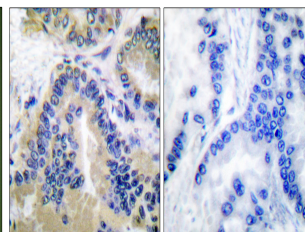
Gene ID	843
Gene Symbol	CASP10
Uniprot ID	CASPA_HUMAN
Immunogen	The antiserum was produced against synthesized peptide derived from the human Caspase 10 at the amino acid range 430-479
Immunogen Region	430-479 aa
Specificity	Caspase-10 B/D Polyclonal Antibody detects endogenous levels of proCaspase-10 B/D protein, activated Caspase-10 (isoform B and D) and Caspase-10 (isoform B and D) subunit p12
Immunogen Sequence	



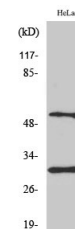
Western blot analysis of lysates from HeLa cells, using Caspase 10 Antibody. The lane on the right is blocked with the synthesized peptide.



Immunofluorescence analysis of HeLa cells, using Caspase 10 Antibody. The picture on the right is blocked with the synthesized peptide.



Immunohistochemistry analysis of paraffin-embedded human lung carcinoma tissue, using Caspase 10 Antibody. The picture on the right is blocked with the synthesized peptide.



Western blot analysis of various cells using Caspase-10 B/C Polyclonal Antibody

This product is suitable for in-vitro studies under the RESEARCH USE ONLY [RUO] licence. This product must not be used as for diagnostic or other medical purposes.
St John's Laboratory Ltd, Knowledge Dock Business Centre, University Way, London, E16 2RD | Tel: 0208 223 3081