

Anti-CSNK1E antibody (276-325 aa) (STJ92016)

STJ92016

GENERAL INFORMATION

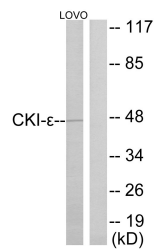
Product Type	Primary antibodies
Short Description	Rabbit polyclonal antibody anti-Casein kinase I isoform epsilon (276-325 aa) is suitable for use in Western Blot, Immunohistochemistry, Immunofluorescence and ELISA research applications.
Applications	WB/IHC/IF/ELISA
Host/Source	Rabbit
Reactivity	Human/Mouse

PRODUCT PROPERTIES

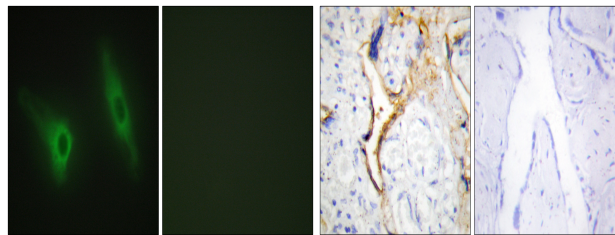
Clonality	Polyclonal
Clone ID	
Concentration	1 mg/mL
Conjugation	Unconjugated
Purification	The antibody was affinity-purified from rabbit antiserum by affinity-chromatography using epitope-specific immunogen.
Dilution Range	WB 1:500-1:2000 IHC 1:100-1:300 IF 1:200-1:1000 ELISA 1:20000
Formulation	Liquid in PBS containing 50% Glycerol, 0.5% BSA and 0.02% Sodium Azide.
Isotype	IgG
Storage Instruction	Store at -20°C for up to 1 year from the date of receipt, and avoid repeat freeze-thaw cycles.

TARGET INFORMATION

Gene ID	102800317/1454
Gene Symbol	CSNK1E
Uniprot ID	KC1E_HUMAN
Immunogen	The antiserum was produced against synthesized peptide derived from the human CKI-epsilon at the amino acid range 276-325
Immunogen Region	276-325 aa
Specificity	Casein Kinase I Epsilon Polyclonal Antibody detects endogenous levels of Casein Kinase I Epsilon protein.
Immunogen Sequence	

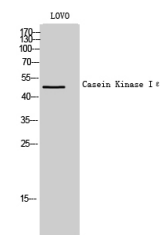


Western blot analysis of lysates from LOVO cells, using CKI-epsilon Antibody. The lane on the right is blocked with the synthesized peptide.



Immunofluorescence analysis of HeLa cells, using CKI-epsilon Antibody. The picture on the right is blocked with the synthesized peptide.

Immunohistochemistry analysis of paraffin-embedded human placenta tissue, using CKI-epsilon Antibody. The picture on the right is blocked with the synthesized peptide.



Western blot analysis of LOVO cells using Casein Kinase I Epsilon Polyclonal Antibody