

Anti-CAMK1 antibody (143-192 aa) (STJ91993)

STJ91993

GENERAL INFORMATION

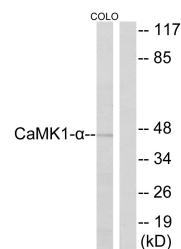
Product Type	Primary antibodies
Short Description	Rabbit polyclonal antibody anti-Calcium/calmodulin-dependent protein kinase type 1 (143-192 aa) is suitable for use in Western Blot, Immunohistochemistry, Immunofluorescence and ELISA research applications.
Applications	WB/IHC/IF/ELISA
Host/Source	Rabbit
Reactivity	Human/Mouse/Rat

PRODUCT PROPERTIES

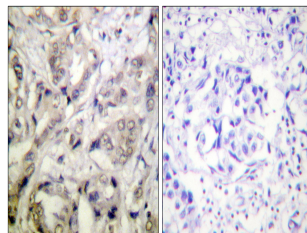
Clonality	Polyclonal
Clone ID	
Concentration	1 mg/mL
Conjugation	Unconjugated
Purification	The antibody was affinity-purified from rabbit antiserum by affinity-chromatography using epitope-specific immunogen.
Dilution Range	WB 1:500-1:2000 IHC 1:100-1:300 ELISA 1:20000 IF 1:50-200
Formulation	Liquid in PBS containing 50% Glycerol, 0.5% BSA and 0.02% Sodium Azide.
Isotype	IgG
Storage Instruction	Store at -20°C for up to 1 year from the date of receipt, and avoid repeat freeze-thaw cycles.

TARGET INFORMATION

Gene ID	8536
Gene Symbol	CAMK1
Uniprot ID	KCC1A_HUMAN
Immunogen	The antiserum was produced against synthesized peptide derived from the human CaMK1-alpha at the amino acid range 143-192
Immunogen Region	143-192 aa
Specificity	CaMKI Alpha Polyclonal Antibody detects endogenous levels of CaMKI Alpha protein.
Immunogen Sequence	



Western blot analysis of lysates from COLO cells, using CaMK1-alpha Antibody. The lane on the right is blocked with the synthesized peptide.



Immunohistochemistry analysis of paraffin-embedded human breast carcinoma tissue, using CaMK1-alpha Antibody. The picture on the right is blocked with the synthesized peptide.