

Anti-CAGE1 antibody (711-760 aa) (STJ91971)

STJ91971

GENERAL INFORMATION

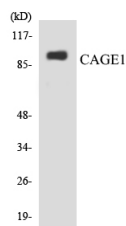
Product Type	Primary antibodies
Short Description	Rabbit polyclonal antibody anti-Cancer-associated gene 1 protein (711-760 aa) is suitable for use in Western Blot, Immunohistochemistry, Immunofluorescence and ELISA research applications.
Applications	WB/IHC/IF/ELISA
Host/Source	Rabbit
Reactivity	Human/Rat/Mouse

PRODUCT PROPERTIES

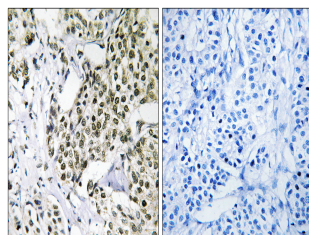
Clonality	Polyclonal
Clone ID	
Concentration	1 mg/mL
Conjugation	Unconjugated
Purification	The antibody was affinity-purified from rabbit antiserum by affinity-chromatography using epitope-specific immunogen.
Dilution Range	WB 1:500-1:2000 IHC 1:100-1:300 ELISA 1:40000 IF 1:50-200
Formulation	Liquid in PBS containing 50% Glycerol, 0.5% BSA and 0.02% Sodium Azide.
Isotype	IgG
Storage	Store at -20°C for up to 1 year from the date of receipt, and avoid repeat freeze-thaw cycles.
Instruction	

TARGET INFORMATION

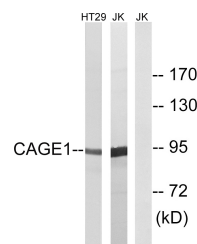
Gene ID	285782
Gene Symbol	CAGE1
Uniprot ID	CAGE1_HUMAN
Immunogen	The antiserum was produced against synthesized peptide derived from the human CAGE1 at the amino acid range 711-760
Immunogen Region	711-760 aa
Specificity	CAGE-1 Polyclonal Antibody detects endogenous levels of CAGE-1 protein.
Immunogen Sequence	



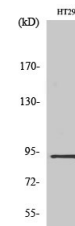
Western blot analysis of the lysates from HepG2 cells using CAGE1 antibody.



Immunohistochemistry analysis of paraffin-embedded human breast carcinoma tissue, using CAGE1 Antibody. The picture on the right is blocked with the synthesized peptide.



Western blot analysis of lysates from HT-29 and Jurkat cells, using CAGE1 Antibody. The lane on the right is blocked with the synthesized peptide.



Western blot analysis of various cells using CAGE-1 Polyclonal Antibody diluted at 1:10,000