

Anti-CABLES1 antibody (561-610 aa) (STJ91953)

STJ91953

GENERAL INFORMATION

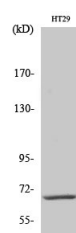
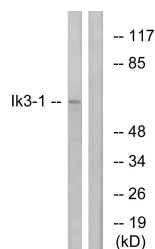
Product Type	Primary antibodies
Short Description	Rabbit polyclonal antibody anti-CDK5 and ABL1 enzyme substrate 1 (561-610 aa) is suitable for use in Western Blot, Immunohistochemistry, Immunofluorescence and ELISA research applications.
Applications	WB/IHC/IF/ELISA
Host/Source	Rabbit
Reactivity	Human/Mouse

PRODUCT PROPERTIES

Clonality	Polyclonal
Clone ID	
Concentration	1 mg/mL
Conjugation	Unconjugated
Purification	The antibody was affinity-purified from rabbit antiserum by affinity-chromatography using epitope-specific immunogen.
Dilution	WB 1:500-1:2000
Range	IHC 1:100-1:300 IF 1:200-1:1000 ELISA 1:20000
Formulation	Liquid in PBS containing 50% Glycerol, 0.5% BSA and 0.02% Sodium Azide.
Isotype	IgG
Storage Instruction	Store at -20°C for up to 1 year from the date of receipt, and avoid repeat freeze-thaw cycles.

TARGET INFORMATION

Gene ID	91768
Gene Symbol	CABLES1
Uniprot ID	CABL1_HUMAN
Immunogen	The antiserum was produced against synthesized peptide derived from the human Ik3-1 at the amino acid range 561-610
Immunogen Region	561-610 aa
Specificity	Cables1 Polyclonal Antibody detects endogenous levels of Cables1 protein.
Immunogen Sequence	



Western blot analysis of lysates from LOVO cells, using Ik3-1 Antibody. The lane on the right is blocked with the synthesized peptide.

Western blot analysis of various cells using Cables1 Polyclonal Antibody diluted at 1/1000.