

## Anti-CA12 antibody (231-280 aa) (STJ91945)

STJ91945

### GENERAL INFORMATION

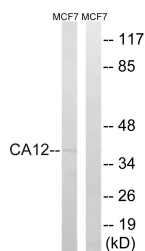
<b>Product Type</b>	Primary antibodies
<b>Short Description</b>	Rabbit polyclonal antibody anti-Carbonic anhydrase 12 (231-280 aa) is suitable for use in Western Blot, Immunohistochemistry, Immunofluorescence and ELISA research applications.
<b>Applications</b>	WB/IHC/IF/ELISA
<b>Host/Source</b>	Rabbit
<b>Reactivity</b>	Human/Mouse/Rat

### PRODUCT PROPERTIES

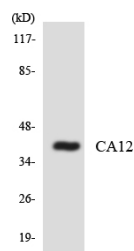
<b>Clonality</b>	Polyclonal
<b>Clone ID</b>	
<b>Concentration</b>	1 mg/mL
<b>Conjugation</b>	Unconjugated
<b>Purification</b>	The antibody was affinity-purified from rabbit antiserum by affinity-chromatography using epitope-specific immunogen.
<b>Dilution Range</b>	IHC-P 100-300 WB 1:500-1:2000 ELISA 1:40000 IF 1:50-200
<b>Formulation</b>	Liquid in PBS containing 50% Glycerol, 0.5% BSA and 0.02% Sodium Azide.
<b>Isotype</b>	IgG
<b>Storage Instruction</b>	Store at -20°C for up to 1 year from the date of receipt, and avoid repeat freeze-thaw cycles.

### TARGET INFORMATION

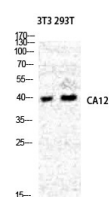
<b>Gene ID</b>	771
<b>Gene Symbol</b>	CA12
<b>Uniprot ID</b>	CAH12_HUMAN
<b>Immunogen</b>	The antiserum was produced against synthesized peptide derived from the human CA12 at the amino acid range 231-280
<b>Immunogen Region</b>	231-280 aa
<b>Specificity</b>	CA XII Polyclonal Antibody detects endogenous levels of CA XII protein.
<b>Immunogen Sequence</b>	



Western blot analysis of lysates from MCF-7 cells, using CA12 Antibody. The lane on the right is blocked with the synthesized peptide.



Western blot analysis of the lysates from COLO205 cells using CA12 antibody.



Western blot analysis of NIH-3T3 293T cells using CA XII Polyclonal Antibody diluted at 1/4 2000