

Anti-CA2 antibody (180-229 aa) (STJ91938)

STJ91938

GENERAL INFORMATION

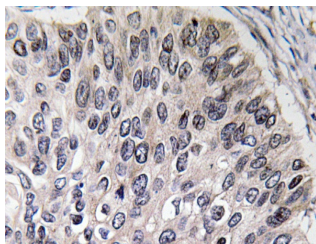
Product Type	Primary antibodies
Short Description	Rabbit polyclonal antibody anti-Carbonic anhydrase 2 (180-229 aa) is suitable for use in Western Blot, Immunohistochemistry, Immunofluorescence and ELISA research applications.
Applications	WB/IHC/IF/ELISA
Host/Source	Rabbit
Reactivity	Human/Rat

PRODUCT PROPERTIES

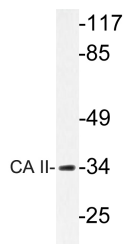
Clonality	Polyclonal
Clone ID	
Concentration	1 mg/mL
Conjugation	Unconjugated
Purification	The antibody was affinity-purified from rabbit antiserum by affinity-chromatography using epitope-specific immunogen.
Dilution Range	WB 1:500-1:2000 IHC 1:100-1:300 ELISA 1:40000 IF 1:50-200
Formulation	Liquid in PBS containing 50% Glycerol, 0.5% BSA and 0.02% Sodium Azide.
Isotype	IgG
Storage Instruction	Store at -20°C for up to 1 year from the date of receipt, and avoid repeat freeze-thaw cycles.

TARGET INFORMATION

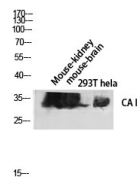
Gene ID	760
Gene Symbol	CA2
Uniprot ID	CAH2_HUMAN
Immunogen	The antiserum was produced against synthesized peptide derived from the human CA II at the amino acid range 180-229
Immunogen Region	180-229 aa
Specificity	CA II Polyclonal Antibody detects endogenous levels of CA II protein.
Immunogen Sequence	



Immunohistochemistry analysis of CA II antibody in paraffin-embedded human lung carcinoma tissue.



Western blot analysis of lysate from rat heart cells, using CA II antibody.



Western blot analysis of Mouse-kidney mouse-brain 293T hela lysis using CA II antibody. Antibody was diluted at 1:2000

This product is suitable for in-vitro studies under the RESEARCH USE ONLY [RUO] licence. This product must not be used as for diagnostic or other medical purposes.
St John's Laboratory Ltd, Knowledge Dock Business Centre, University Way, London, E16 2RD | Tel: 0208 223 3081