

## Anti-C1QL2 antibody (231-280 aa) (STJ91931)

STJ91931

### GENERAL INFORMATION

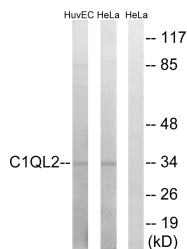
<b>Product Type</b>	Primary antibodies
<b>Short Description</b>	Rabbit polyclonal antibody anti-Complement C1q-like protein 2 (231-280 aa) is suitable for use in Western Blot, Immunohistochemistry, Immunofluorescence and ELISA research applications.
<b>Applications</b>	WB/IHC/IF/ELISA
<b>Host/Source</b>	Rabbit
<b>Reactivity</b>	Human/Mouse

### PRODUCT PROPERTIES

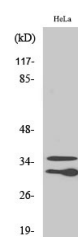
<b>Clonality</b>	Polyclonal
<b>Clone ID</b>	
<b>Concentration</b>	1 mg/mL
<b>Conjugation</b>	Unconjugated
<b>Purification</b>	The antibody was affinity-purified from rabbit antiserum by affinity-chromatography using epitope-specific immunogen.
<b>Dilution Range</b>	WB 1:500-1:2000 IHC 1:100-1:300 ELISA 1:10000 IF 1:50-200
<b>Formulation</b>	Liquid in PBS containing 50% Glycerol, 0.5% BSA and 0.02% Sodium Azide.
<b>Isotype</b>	IgG
<b>Storage Instruction</b>	Store at -20°C for up to 1 year from the date of receipt, and avoid repeat freeze-thaw cycles.

### TARGET INFORMATION

<b>Gene ID</b>	165257
<b>Gene Symbol</b>	C1QL2
<b>Uniprot ID</b>	C1QL2_HUMAN
<b>Immunogen</b>	The antiserum was produced against synthesized peptide derived from the human C1QL2 at the amino acid range 231-280
<b>Immunogen Region</b>	231-280 aa
<b>Specificity</b>	C1QL2 Polyclonal Antibody detects endogenous levels of C1QL2 protein.
<b>Immunogen Sequence</b>	



Western blot analysis of lysates from HeLa and HUVEC cells, using C1QL2 Antibody. The lane on the right is blocked with the synthesized peptide.



Western blot analysis of various cells using C1QL2 Polyclonal Antibody.