

Anti-SERPING1 antibody (342-391 aa) (STJ91926)

STJ91926

GENERAL INFORMATION

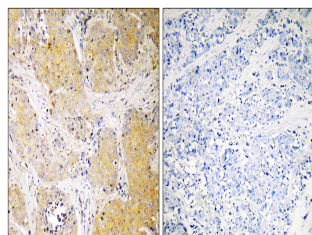
Product Type	Primary antibodies
Short Description	Rabbit polyclonal antibody anti-Plasma protease C1 inhibitor (342-391 aa) is suitable for use in Western Blot, Immunohistochemistry, Immunofluorescence and ELISA research applications.
Applications	WB/IHC/IF/ELISA
Host/Source	Rabbit
Reactivity	Human/Rat/Mouse

PRODUCT PROPERTIES

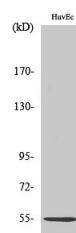
Clonality	Polyclonal
Clone ID	
Concentration	1 mg/mL
Conjugation	Unconjugated
Purification	The antibody was affinity-purified from rabbit antiserum by affinity-chromatography using epitope-specific immunogen.
Dilution Range	WB 1:500-1:2000 IHC 1:100-1:300 ELISA 1:40000 IF 1:50-200
Formulation	Liquid in PBS containing 50% Glycerol, 0.5% BSA and 0.02% Sodium Azide.
Isotype	IgG
Storage Instruction	Store at -20°C for up to 1 year from the date of receipt, and avoid repeat freeze-thaw cycles.

TARGET INFORMATION

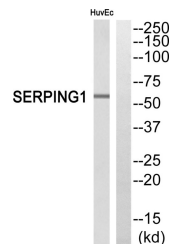
Gene ID	710
Gene Symbol	SERPING1
Uniprot ID	IC1_HUMAN
Immunogen	The antiserum was produced against synthesized peptide derived from the human SERPING1 at the amino acid range 342-391
Immunogen Region	342-391 aa
Specificity	C1INH Polyclonal Antibody detects endogenous levels of C1INH protein.
Immunogen Sequence	



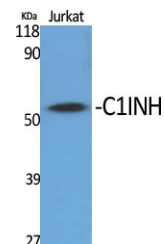
Immunohistochemistry analysis of paraffin-embedded human breast cancer, using SERPING1 Antibody. The picture on the right is blocked with the SERPING1 peptide.



Western blot analysis of HuvEc cells using C1INH Polyclonal Antibody



Western blot analysis of SERPING1 Antibody. The lane on the right is blocked with the SERPING1 peptide.



Western blot analysis of various cells using C1INH Polyclonal Antibody

This product is suitable for in-vitro studies under the RESEARCH USE ONLY [RUO] licence. This product must not be used as for diagnostic or other medical purposes.
St John's Laboratory Ltd, Knowledge Dock Business Centre, University Way, London, E16 2RD | Tel: 0208 223 3081