

Anti-KLHL36 antibody (567-616 aa) (STJ91925)

STJ91925

GENERAL INFORMATION

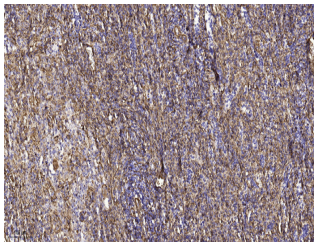
Product Type	Primary antibodies
Short Description	Rabbit polyclonal antibody anti-Kelch-like protein 36 (567-616 aa) is suitable for use in Immunohistochemistry, Immunofluorescence and ELISA research applications.
Applications	IHC/IF/ELISA
Host/Source	Rabbit
Reactivity	Human/Rat/Mouse

PRODUCT PROPERTIES

Clonality	Polyclonal
Clone ID	
Concentration	1 mg/mL
Conjugation	Unconjugated
Purification	The antibody was affinity-purified from rabbit antiserum by affinity-chromatography using epitope-specific immunogen.
Dilution Range	IHC 1:100-1:300 ELISA 1:40000 IF 1:50-200
Formulation	Liquid in PBS containing 50% Glycerol, 0.5% BSA and 0.02% Sodium Azide.
Isotype	IgG
Storage Instruction	Store at -20°C for up to 1 year from the date of receipt, and avoid repeat freeze-thaw cycles.

TARGET INFORMATION

Gene ID	79786
Gene Symbol	KLHL36
Uniprot ID	KLH36_HUMAN
Immunogen	The antiserum was produced against synthesized peptide derived from the human C16orf44 at the amino acid range 567-616
Immunogen Region	567-616 aa
Specificity	C16orf44 Polyclonal Antibody detects endogenous levels of C16orf44 protein.
Immunogen Sequence	



Immunohistochemical analysis of paraffin-embedded human spleen tissue. 1, primary Antibody was diluted at 1:200 (4A°C overnight). 2, Sodium citrate pH 6.0 was used for antigen retrieval (>98A°C, 20min). 3, Secondary antibody was diluted at 1:200