

Anti-CEBPG antibody (31-80 aa) (STJ91920)

STJ91920

GENERAL INFORMATION

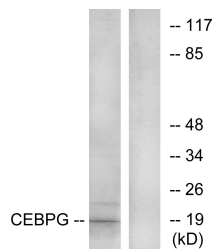
Product Type	Primary antibodies
Short Description	Rabbit polyclonal antibody anti-CCAAT/enhancer-binding protein gamma (31-80 aa) is suitable for use in Western Blot, Immunohistochemistry, Immunofluorescence and ELISA research applications.
Applications	WB/IHC/IF/ELISA
Host/Source	Rabbit
Reactivity	Human/Mouse/Rat

PRODUCT PROPERTIES

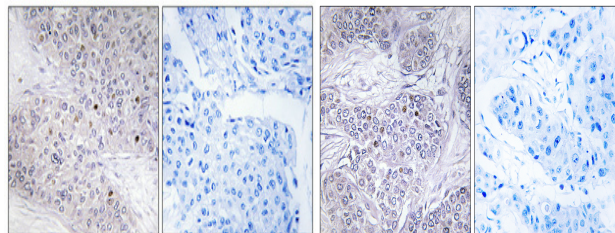
Clonality	Polyclonal
Clone ID	
Concentration	1 mg/mL
Conjugation	Unconjugated
Purification	The antibody was affinity-purified from rabbit antiserum by affinity-chromatography using epitope-specific immunogen.
Dilution Range	WB 1:500-1:2000 IHC 1:100-1:300 IF 1:200-1:1000 ELISA 1:20000
Formulation	Liquid in PBS containing 50% Glycerol, 0.5% BSA and 0.02% Sodium Azide.
Isotype	IgG
Storage Instruction	Store at -20°C for up to 1 year from the date of receipt, and avoid repeat freeze-thaw cycles.

TARGET INFORMATION

Gene ID	1054
Gene Symbol	CEBPG
Uniprot ID	CEBPG_HUMAN
Immunogen	The antiserum was produced against synthesized peptide derived from the human CEBPG at the amino acid range 31-80
Immunogen Region	31-80 aa
Specificity	C/EBP Gamma Polyclonal Antibody detects endogenous levels of C/EBP Gamma protein.
Immunogen Sequence	

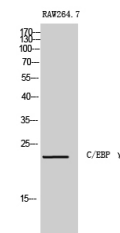


Western blot analysis of lysates from RAW264.7 cells, using CEBPG Antibody. The lane on the right is blocked with the synthesized peptide.



Immunohistochemical analysis of paraffin-embedded human breast cancer. Antibody was diluted at 1:100 (4A°C overnight). High-pressure and temperature Tris-EDTA, pH8.0 was used for antigen retrieval. Negative control (right) obtained from antibody was pre-absorbed by immunogen peptide.

Immunohistochemistry analysis of paraffin-embedded human breast carcinoma tissue, using CEBPG Antibody. The picture on the right is blocked with the synthesized peptide.



Western blot analysis of RAW264.7 cells using C/EBP Gamma Polyclonal Antibody cells nucleus extracted by Minute TM Cytoplasmic and Nuclear Fractionation kit (SC-003, Inventiotech, MN, USA).

This product is suitable for in-vitro studies under the RESEARCH USE ONLY [RUO] licence. This product must not be used as for diagnostic or other medical purposes.
St John's Laboratory Ltd, Knowledge Dock Business Centre, University Way, London, E16 2RD | Tel: 0208 223 3081