

## Anti-BUB1B antibody (341-390 aa) (STJ91914)

STJ91914

### GENERAL INFORMATION

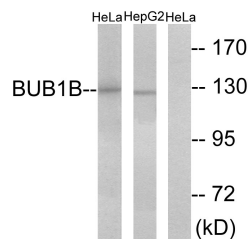
<b>Product Type</b>	Primary antibodies
<b>Short Description</b>	Rabbit polyclonal antibody anti-Mitotic checkpoint serine/threonine-protein kinase BUB1 beta (341-390 aa) is suitable for use in Western Blot and ELISA research applications.
<b>Applications</b>	WB/ELISA
<b>Host/Source</b>	Rabbit
<b>Reactivity</b>	Human/Mouse

### PRODUCT PROPERTIES

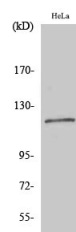
<b>Clonality</b>	Polyclonal
<b>Clone ID</b>	
<b>Concentration</b>	1 mg/mL
<b>Conjugation</b>	Unconjugated
<b>Purification</b>	The antibody was affinity-purified from rabbit antiserum by affinity-chromatography using epitope-specific immunogen.
<b>Dilution Range</b>	WB 1:500-1:2000 ELISA 1:20000
<b>Formulation</b>	Liquid in PBS containing 50% Glycerol, 0.5% BSA and 0.02% Sodium Azide.
<b>Isotype</b>	IgG
<b>Storage</b>	Store at -20°C for up to 1 year from the date of receipt, and avoid repeat freeze-thaw cycles.
<b>Instruction</b>	

### TARGET INFORMATION

<b>Gene ID</b>	701
<b>Gene Symbol</b>	BUB1B
<b>Uniprot ID</b>	BUB1B_HUMAN
<b>Immunogen</b>	The antiserum was produced against synthesized peptide derived from the human BUB1B at the amino acid range 341-390
<b>Immunogen Region</b>	341-390 aa
<b>Specificity</b>	BubR1 Polyclonal Antibody detects endogenous levels of BubR1 protein.
<b>Immunogen Sequence</b>	



Western blot analysis of lysates from HeLa and HepG2 cells, treated with H<sub>2</sub>O<sub>2</sub> 100μM 30', using BUB1B Antibody. The lane on the right is blocked with the synthesized peptide.



Western blot analysis of various cells using BubR1 Polyclonal Antibody

This product is suitable for in-vitro studies under the RESEARCH USE ONLY [RUO] licence. This product must not be used as for diagnostic or other medical purposes.  
St John's Laboratory Ltd, Knowledge Dock Business Centre, University Way, London, E16 2RD | Tel: 0208 223 3081