

Anti-BST1 antibody (71-120 aa) (STJ91903)

STJ91903

GENERAL INFORMATION

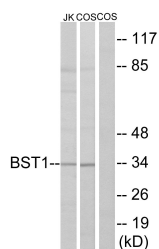
Product Type	Primary antibodies
Short Description	Rabbit polyclonal antibody anti-ADP-ribosyl cyclase/cyclic ADP-ribose hydrolase 2 (71-120 aa) is suitable for use in Western Blot and ELISA research applications.
Applications	WB/ELISA
Host/Source	Rabbit
Reactivity	Human/Mouse/Rat/Monkey

PRODUCT PROPERTIES

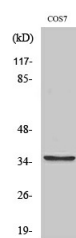
Clonality	Polyclonal
Clone ID	
Concentration	1 mg/mL
Conjugation	Unconjugated
Purification	The antibody was affinity-purified from rabbit antiserum by affinity-chromatography using epitope-specific immunogen.
Dilution Range	WB 1:500-1:2000 ELISA 1:40000
Formulation	Liquid in PBS containing 50% Glycerol, 0.5% BSA and 0.02% Sodium Azide.
Isotype	IgG
Storage	Store at -20°C for up to 1 year from the date of receipt, and avoid repeat freeze-thaw cycles.
Instruction	

TARGET INFORMATION

Gene ID	683
Gene Symbol	BST1
Uniprot ID	BST1_HUMAN
Immunogen	The antiserum was produced against synthesized peptide derived from the human BST1 at the amino acid range 71-120
Immunogen Region	71-120 aa
Specificity	BST-1 Polyclonal Antibody detects endogenous levels of BST-1 protein.
Immunogen Sequence	



Western blot analysis of lysates from COS7 and Jurkat cells, using BST1 Antibody. The lane on the right is blocked with the synthesized peptide.



Western blot analysis of various cells using BST-1 Polyclonal Antibody