

Anti-ARID4B antibody (761-810 aa) (STJ91886)

STJ91886

GENERAL INFORMATION

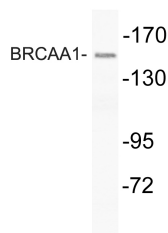
| | |
|--------------------------|--|
| Product Type | Primary antibodies |
| Short Description | Rabbit polyclonal antibody anti-AT-rich interactive domain-containing protein 4B (761-810 aa) is suitable for use in Western Blot and ELISA research applications. |
| Applications | WB/ELISA |
| Host/Source | Rabbit |
| Reactivity | Human/Mouse/Rat |

PRODUCT PROPERTIES

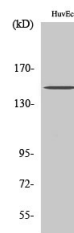
| | |
|-----------------------|---|
| Clonality | Polyclonal |
| Clone ID | |
| Concentration | 1 mg/mL |
| Conjugation | Unconjugated |
| Purification | The antibody was affinity-purified from rabbit antiserum by affinity-chromatography using epitope-specific immunogen. |
| Dilution Range | WB 1:500-1:2000 ELISA 1:10000 |
| Formulation | Liquid in PBS containing 50% Glycerol, 0.5% BSA and 0.02% Sodium Azide. |
| Isotype | IgG |
| Storage | Store at -20°C for up to 1 year from the date of receipt, and avoid repeat freeze-thaw cycles. |
| Instruction | |

TARGET INFORMATION

| | |
|---------------------------|--|
| Gene ID | 51742 |
| Gene Symbol | ARID4B |
| Uniprot ID | ARI4B_HUMAN |
| Immunogen | The antiserum was produced against synthesized peptide derived from the human BRCA1 amino acid 1 at the amino acid range 761-810 |
| Immunogen Region | 761-810 aa |
| Specificity | BRCA1 Polyclonal Antibody detects endogenous levels of BRCA1 protein. |
| Immunogen Sequence | |



Western blot analysis of lysate from HUVEC cells, using BRCA1 antibody.



Western blot analysis of various cells using BRCA1 Polyclonal Antibody

This product is suitable for in-vitro studies under the RESEARCH USE ONLY [RUO] licence. This product must not be used as for diagnostic or other medical purposes.
St John's Laboratory Ltd, Knowledge Dock Business Centre, University Way, London, E16 2RD | Tel: 0208 223 3081