

Anti-MYBL2 antibody (551-600 aa) (STJ91875)

STJ91875

GENERAL INFORMATION

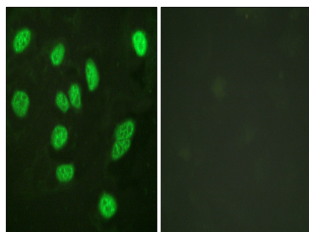
Product Type	Primary antibodies
Short Description	Rabbit polyclonal antibody anti-Myb-related protein B (551-600 aa) is suitable for use in Western Blot, Immunoprecipitation, Immunofluorescence and ELISA research applications.
Applications	WB/IP/IF/ELISA
Host/Source	Rabbit
Reactivity	Human/Mouse/Rat/Rice

PRODUCT PROPERTIES

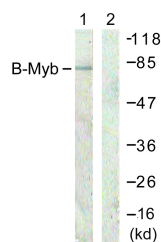
Clonality	Polyclonal
Clone ID	
Concentration	1 mg/mL
Conjugation	Unconjugated
Purification	The antibody was affinity-purified from rabbit antiserum by affinity-chromatography using epitope-specific immunogen.
Dilution Range	WB 1:500-1:2000 IF 1:200-1:1000 ELISA 1:20000
Formulation	Liquid in PBS containing 50% Glycerol, 0.5% BSA and 0.02% Sodium Azide.
Isotype	IgG
Storage Instruction	Store at -20°C for up to 1 year from the date of receipt, and avoid repeat freeze-thaw cycles.

TARGET INFORMATION

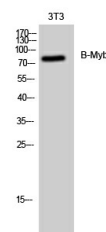
Gene ID	4605
Gene Symbol	MYBL2
Uniprot ID	MYBB_HUMAN
Immunogen	The antiserum was produced against synthesized peptide derived from the human B-Myb at the amino acid range 551-600
Immunogen Region	551-600 aa
Specificity	B-Myb Polyclonal Antibody detects endogenous levels of B-Myb protein.
Immunogen Sequence	



Immunofluorescence analysis of HeLa cells, using B-Myb Antibody. The picture on the right is blocked with the synthesized peptide.



Western blot analysis of lysates from A549 cells, using B-Myb Antibody. The lane on the right is blocked with the synthesized peptide.



Western blot analysis of 3T3 cells using B-Myb Polyclonal Antibody diluted at 1:10000 cells nucleus extracted by Minute TM Cytoplasmic and Nuclear Fractionation kit (SC-003, Inventiotech, MN, USA).