

## Anti-BMP8B antibody (261-310 aa) (STJ91871)

STJ91871

### GENERAL INFORMATION

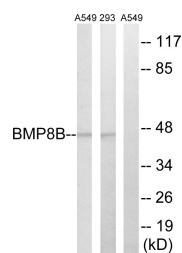
<b>Product Type</b>	Primary antibodies
<b>Short Description</b>	Rabbit polyclonal antibody anti-Bone morphogenetic protein 8B (261-310 aa) is suitable for use in Western Blot and ELISA research applications.
<b>Applications</b>	WB/ELISA
<b>Host/Source</b>	Rabbit
<b>Reactivity</b>	Human/Rat/Mouse

### PRODUCT PROPERTIES

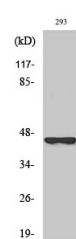
<b>Clonality</b>	Polyclonal
<b>Clone ID</b>	
<b>Concentration</b>	1 mg/mL
<b>Conjugation</b>	Unconjugated
<b>Purification</b>	The antibody was affinity-purified from rabbit antiserum by affinity-chromatography using epitope-specific immunogen.
<b>Dilution Range</b>	WB 1:500-1:2000 ELISA 1:40000
<b>Formulation</b>	Liquid in PBS containing 50% Glycerol, 0.5% BSA and 0.02% Sodium Azide.
<b>Isotype</b>	IgG
<b>Storage Instruction</b>	Store at -20°C for up to 1 year from the date of receipt, and avoid repeat freeze-thaw cycles.

### TARGET INFORMATION

<b>Gene ID</b>	656
<b>Gene Symbol</b>	BMP8B
<b>Uniprot ID</b>	BMP8B_HUMAN
<b>Immunogen</b>	The antiserum was produced against synthesized peptide derived from the human BMP8B at the amino acid range 261-310
<b>Immunogen Region</b>	261-310 aa
<b>Specificity</b>	BMP-8B Polyclonal Antibody detects endogenous levels of BMP-8B protein.
<b>Immunogen Sequence</b>	



Western blot analysis of lysates from 293 and A549 cells, using BMP8B Antibody. The lane on the right is blocked with the synthesized peptide.



Western blot analysis of various cells using BMP-8B Polyclonal Antibody diluted at 1/14 2000

This product is suitable for in-vitro studies under the RESEARCH USE ONLY [RUO] licence. This product must not be used as for diagnostic or other medical purposes.  
St John's Laboratory Ltd, Knowledge Dock Business Centre, University Way, London, E16 2RD | Tel: 0208 223 3081