

Anti-ARFGEF2 antibody (1491-1540 aa) (STJ91854)

STJ91854

GENERAL INFORMATION

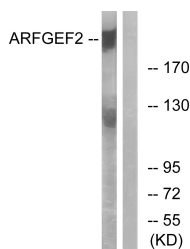
Product Type	Primary antibodies
Short Description	Rabbit polyclonal antibody anti-Brefeldin A-inhibited guanine nucleotide-exchange protein 2 (1491-1540 aa) is suitable for use in Western Blot, Immunohistochemistry, Immunofluorescence and ELISA research applications.
Applications	WB/IHC/IF/ELISA
Host/Source	Rabbit
Reactivity	Human/Mouse/Rat

PRODUCT PROPERTIES

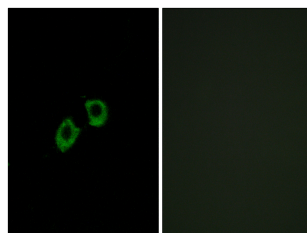
Clonality	Polyclonal
Clone ID	
Concentration	1 mg/mL
Conjugation	Unconjugated
Purification	The antibody was affinity-purified from rabbit antiserum by affinity-chromatography using epitope-specific immunogen.
Dilution	WB 1:500-1:2000
Range	IHC 1:100-1:300 IF 1:200-1:1000 ELISA 1:20000
Formulation	Liquid in PBS containing 50% Glycerol, 0.5% BSA and 0.02% Sodium Azide.
Isotype	IgG
Storage	Store at -20°C for up to 1 year from the date of receipt, and avoid repeat freeze-thaw cycles.
Instruction	

TARGET INFORMATION

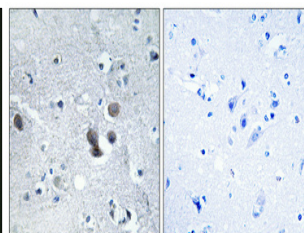
Gene ID	10564
Gene Symbol	ARFGEF2
Uniprot ID	BIG2_HUMAN
Immunogen	The antiserum was produced against synthesized peptide derived from the human ARFGEF2 at the amino acid range 1491-1540
Immunogen	1491-1540 aa
Region	
Specificity	BIG2 Polyclonal Antibody detects endogenous levels of BIG2 protein.
Immunogen	
Sequence	



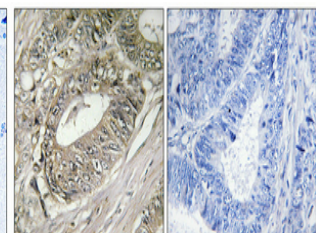
Western blot analysis of lysates from A549 cells, using ARFGEF2 Antibody. The lane on the right is blocked with the synthesized peptide.



Immunofluorescence analysis of A549 cells, using ARFGEF2 Antibody. The picture on the right is blocked with the synthesized peptide.



Immunohistochemical analysis of paraffin-embedded Human brain. Antibody was diluted at 1:100 (4A°C overnight). High-pressure and temperature Tris-EDTA, pH8.0 was used for antigen retrieval. Negative control (right) obtained from antibody was pre-absorbed by immunogen peptide.



Immunohistochemical analysis of paraffin-embedded Human colon cancer. Antibody was diluted at 1:100 (4A°C overnight). High-pressure and temperature Tris-EDTA, pH8.0 was used for antigen retrieval. Negative control (right) obtained from antibody was pre-absorbed by immunogen peptide.

This product is suitable for in-vitro studies under the RESEARCH USE ONLY [RUO] licence. This product must not be used as for diagnostic or other medical purposes.
St John's Laboratory Ltd, Knowledge Dock Business Centre, University Way, London, E16 2RD | Tel: 0208 223 3081