

Anti-BCL2L1 antibody (13-62 aa) (STJ91842)

STJ91842

GENERAL INFORMATION

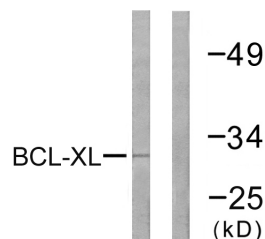
Product Type	Primary antibodies
Short Description	Rabbit polyclonal antibody anti-Bcl-2-like protein 1 (13-62 aa) is suitable for use in Western Blot, Immunohistochemistry, Immunofluorescence and ELISA research applications.
Applications	WB/IHC/IF/ELISA
Host/Source	Rabbit
Reactivity	Human/Mouse/Rat

PRODUCT PROPERTIES

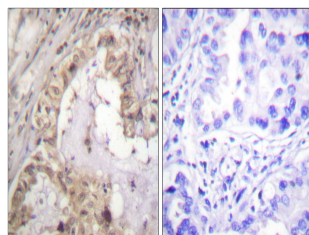
Clonality	Polyclonal
Clone ID	
Concentration	1 mg/mL
Conjugation	Unconjugated
Purification	The antibody was affinity-purified from rabbit antiserum by affinity-chromatography using epitope-specific immunogen.
Dilution Range	WB 1:500-1:2000 IHC 1:100-1:300 IF 1:200-1:1000 ELISA 1:5000
Formulation	Liquid in PBS containing 50% Glycerol, 0.5% BSA and 0.02% Sodium Azide.
Isotype	IgG
Storage Instruction	Store at -20°C for up to 1 year from the date of receipt, and avoid repeat freeze-thaw cycles.

TARGET INFORMATION

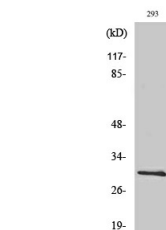
Gene ID	598
Gene Symbol	BCL2L1
Uniprot ID	B2CL1_HUMAN
Immunogen	The antiserum was produced against synthesized peptide derived from the human BCL-XL at the amino acid range 13-62
Immunogen Region	13-62 aa
Specificity	Bcl-x Polyclonal Antibody detects endogenous levels of Bcl-x protein.
Immunogen Sequence	



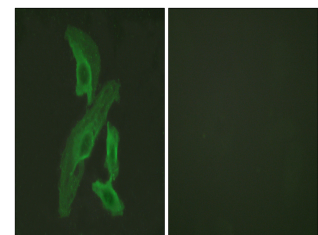
Western blot analysis of lysates from 293 cells, treated with UV 30', using BCL-XL Antibody. The lane on the right is blocked with the synthesized peptide.



Immunohistochemistry analysis of paraffin-embedded human lung carcinoma tissue, using BCL-XL Antibody. The picture on the right is blocked with the synthesized peptide.



Western blot analysis of 293 cells using Bcl-x Polyclonal Antibody diluted at 1:1/4 500.



Immunofluorescence analysis of HeLa cells, using BCL-XL Antibody. The picture on the right is blocked with the synthesized peptide.