

Anti-BAK1 antibody (1-50 aa) (STJ91814)

STJ91814

GENERAL INFORMATION

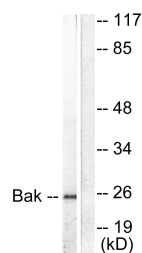
Product Type	Primary antibodies
Short Description	Rabbit polyclonal antibody anti-Bcl-2 homologous antagonist/killer (1-50 aa) is suitable for use in Western Blot, Immunohistochemistry, Immunofluorescence and ELISA research applications.
Applications	WB/IHC/IF/ELISA
Host/Source	Rabbit
Reactivity	Human/Mouse

PRODUCT PROPERTIES

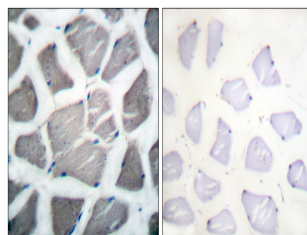
Clonality	Polyclonal
Clone ID	
Concentration	1 mg/mL
Conjugation	Unconjugated
Purification	The antibody was affinity-purified from rabbit antiserum by affinity-chromatography using epitope-specific immunogen.
Dilution Range	WB 1:500-1:2000 IHC-P 1:100-300 ELISA 1:20000 IF 1:100-300
Formulation	Liquid in PBS containing 50% Glycerol, 0.5% BSA and 0.02% Sodium Azide.
Isotype	IgG
Storage Instruction	Store at -20°C for up to 1 year from the date of receipt, and avoid repeat freeze-thaw cycles.

TARGET INFORMATION

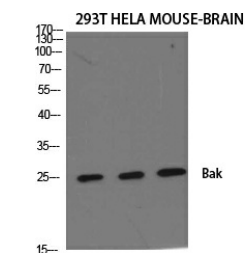
Gene ID	578
Gene Symbol	BAK1
Uniprot ID	BAK_HUMAN
Immunogen	The antiserum was produced against synthesized peptide derived from the human Bak at the amino acid range 1-50
Immunogen Region	1-50 aa
Specificity	Bak Polyclonal Antibody detects endogenous levels of Bak protein.
Immunogen Sequence	



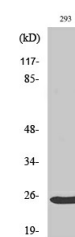
Western blot analysis of lysates from 293 cells, using Bak Antibody. The lane on the right is blocked with the synthesized peptide.



Immunohistochemistry analysis of paraffin-embedded human skeletal muscle tissue, using Bak Antibody. The picture on the right is blocked with the synthesized peptide.



Western blot analysis of various cells using Bak Polyclonal Antibody diluted at 1:500



Western blot analysis of 293 cells using Bak Polyclonal Antibody diluted at 1:500