

Anti-ACTL6A antibody (201-250 aa) (STJ91804)

STJ91804

GENERAL INFORMATION

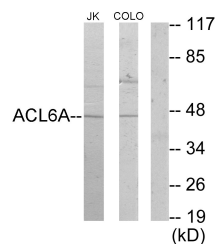
Product Type	Primary antibodies
Short Description	Rabbit polyclonal antibody anti-Actin-like protein 6A (201-250 aa) is suitable for use in Western Blot, Immunohistochemistry, Immunofluorescence and ELISA research applications.
Applications	WB/IHC/IF/ELISA
Host/Source	Rabbit
Reactivity	Human/Mouse/Rat

PRODUCT PROPERTIES

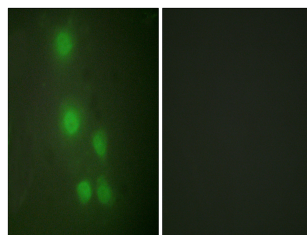
Clonality	Polyclonal
Clone ID	
Concentration	1 mg/mL
Conjugation	Unconjugated
Purification	The antibody was affinity-purified from rabbit antiserum by affinity-chromatography using epitope-specific immunogen.
Dilution Range	WB 1:500-1:2000 IHC 1:100-1:300 IF 1:200-1:1000 ELISA 1:10000
Formulation	Liquid in PBS containing 50% Glycerol, 0.5% BSA and 0.02% Sodium Azide.
Isotype	IgG
Storage Instruction	Store at -20°C for up to 1 year from the date of receipt, and avoid repeat freeze-thaw cycles.

TARGET INFORMATION

Gene ID	86
Gene Symbol	ACTL6A
Uniprot ID	ACL6A_HUMAN
Immunogen	The antiserum was produced against synthesized peptide derived from the human ACTL6A at the amino acid range 201-250
Immunogen Region	201-250 aa
Specificity	BAF53 Polyclonal Antibody detects endogenous levels of BAF53 protein.
Immunogen Sequence	



Western blot analysis of lysates from Jurkat and COLO205 cells, using ACTL6A Antibody. The lane on the right is blocked with the synthesized peptide.



Immunofluorescence analysis of HUVEC cells, using ACTL6A Antibody. The picture on the right is blocked with the synthesized peptide.