

Anti-SMARCC2 antibody (361-410 aa) (STJ91802)

STJ91802

GENERAL INFORMATION

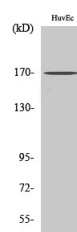
Product Type	Primary antibodies
Short Description	Rabbit polyclonal antibody anti-SWI/SNF complex subunit SMARCC2 (361-410 aa) is suitable for use in Western Blot, Immunofluorescence and ELISA research applications.
Applications	WB/IF/ELISA
Host/Source	Rabbit
Reactivity	Human/Mouse

PRODUCT PROPERTIES

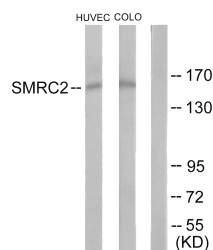
Clonality	Polyclonal
Clone ID	
Concentration	1 mg/mL
Conjugation	Unconjugated
Purification	The antibody was affinity-purified from rabbit antiserum by affinity-chromatography using epitope-specific immunogen.
Dilution Range	WB 1:500-1:2000 IF 1:200-1:1000 ELISA 1:10000
Formulation	Liquid in PBS containing 50% Glycerol, 0.5% BSA and 0.02% Sodium Azide.
Isotype	IgG
Storage Instruction	Store at -20°C for up to 1 year from the date of receipt, and avoid repeat freeze-thaw cycles.

TARGET INFORMATION

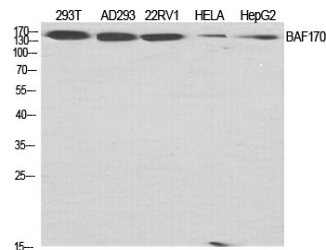
Gene ID	6601
Gene Symbol	SMARCC2
Uniprot ID	SMRC2_HUMAN
Immunogen	The antiserum was produced against synthesized peptide derived from the human SMRC2 at the amino acid range 361-410
Immunogen Region	361-410 aa
Specificity	BAF170 Polyclonal Antibody detects endogenous levels of BAF170 protein.
Immunogen Sequence	



Western blot analysis of COLO205 cells using BAF170 Polyclonal Antibody diluted at 1:10000 cells nucleus extracted by Minute™ Cytoplasmic and Nuclear Fractionation kit (SC-003, InventiBiotec, MN, USA).



Western blot analysis of lysates from HUVEC and COLO205 cells, using SMRC2 Antibody. The lane on the right is blocked with the synthesized peptide.



Western blot analysis of various cells using BAF170 Polyclonal Antibody diluted at 1:10000 cells nucleus extracted by Minute™ Cytoplasmic and Nuclear Fractionation kit (SC-003, InventiBiotec, MN, USA).

This product is suitable for in-vitro studies under the RESEARCH USE ONLY [RUO] licence. This product must not be used as for diagnostic or other medical purposes.
St John's Laboratory Ltd, Knowledge Dock Business Centre, University Way, London, E16 2RD | Tel: 0208 223 3081