

Anti-ATPAF2 antibody (21-70 aa) (STJ91778)

STJ91778

GENERAL INFORMATION

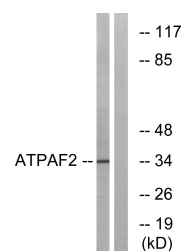
Product Type	Primary antibodies
Short Description	Rabbit polyclonal antibody anti-ATP synthase mitochondrial F1 complex assembly factor 2 (21-70 aa) is suitable for use in Western Blot and ELISA research applications.
Applications	WB/ELISA
Host/Source	Rabbit
Reactivity	Human/Mouse

PRODUCT PROPERTIES

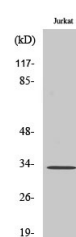
Clonality	Polyclonal
Clone ID	
Concentration	1 mg/mL
Conjugation	Unconjugated
Purification	The antibody was affinity-purified from rabbit antiserum by affinity-chromatography using epitope-specific immunogen.
Dilution Range	WB 1:500-1:2000 ELISA 1:40000
Formulation	Liquid in PBS containing 50% Glycerol, 0.5% BSA and 0.02% Sodium Azide.
Isotype	IgG
Storage	Store at -20°C for up to 1 year from the date of receipt, and avoid repeat freeze-thaw cycles.
Instruction	

TARGET INFORMATION

Gene ID	91647
Gene Symbol	ATPAF2
Uniprot ID	ATPF2_HUMAN
Immunogen	The antiserum was produced against synthesized peptide derived from the human ATPAF2 at the amino acid range 21-70
Immunogen Region	21-70 aa
Specificity	ATPAF2 Polyclonal Antibody detects endogenous levels of ATPAF2 protein.
Immunogen Sequence	



Western blot analysis of lysates from Jurkat cells, using ATPAF2 Antibody. The lane on the right is blocked with the synthesized peptide.



Western blot analysis of various cells using ATPAF2 Polyclonal Antibody.