

Anti-ATP5MGL antibody (51-100 aa) (STJ91774)

STJ91774

GENERAL INFORMATION

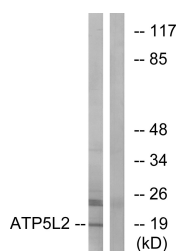
Product Type	Primary antibodies
Short Description	Rabbit polyclonal antibody anti-Putative ATP synthase subunit g 2, mitochondrial (51-100 aa) is suitable for use in Western Blot, Immunofluorescence and ELISA research applications.
Applications	WB/IF/ELISA
Host/Source	Rabbit
Reactivity	Human/Rat/Mouse

PRODUCT PROPERTIES

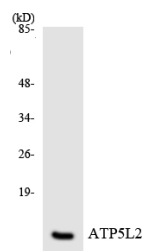
Clonality	Polyclonal
Clone ID	
Concentration	1 mg/mL
Conjugation	Unconjugated
Purification	The antibody was affinity-purified from rabbit antiserum by affinity-chromatography using epitope-specific immunogen.
Dilution Range	WB 1:500-1:2000 IF 1:200-1:1000 ELISA 1:40000
Formulation	Liquid in PBS containing 50% Glycerol, 0.5% BSA and 0.02% Sodium Azide.
Isotype	IgG
Storage Instruction	Store at -20°C for up to 1 year from the date of receipt, and avoid repeat freeze-thaw cycles.

TARGET INFORMATION

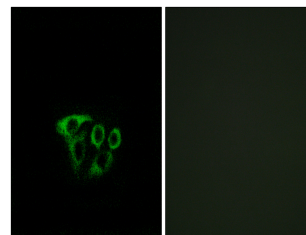
Gene ID	267020
Gene Symbol	ATP5MGL
Uniprot ID	AT5L2_HUMAN
Immunogen	The antiserum was produced against synthesized peptide derived from the human ATP5L2 at the amino acid range 51-100
Immunogen Region	51-100 aa
Specificity	ATP5L2 Polyclonal Antibody detects endogenous levels of ATP5L2 protein.
Immunogen Sequence	



Western blot analysis of lysates from A549 cells, using ATP5L2 Antibody. The lane on the right is blocked with the synthesized peptide.



Western blot analysis of the lysates from HeLa cells using ATP5L2 antibody.



Immunofluorescence analysis of A549 cells, using ATP5L2 Antibody. The picture on the right is blocked with the synthesized peptide.

This product is suitable for in-vitro studies under the RESEARCH USE ONLY [RUO] licence. This product must not be used as for diagnostic or other medical purposes.
St John's Laboratory Ltd, Knowledge Dock Business Centre, University Way, London, E16 2RD | Tel: 0208 223 3081