

Anti-ATP5J2 antibody (21-70 aa) (STJ91773)

STJ91773

GENERAL INFORMATION

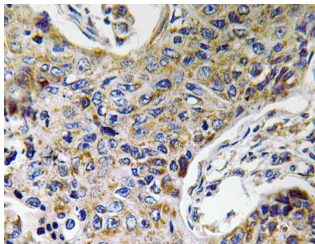
Product Type	Primary antibodies
Short Description	Rabbit polyclonal antibody anti-ATP5J2 (21-70 aa) is suitable for use in Immunohistochemistry, Immunofluorescence and ELISA research applications.
Applications	IHC/IF/ELISA
Host/Source	Rabbit
Reactivity	Human/Rat/Mouse

PRODUCT PROPERTIES

Clonality	Polyclonal
Clone ID	
Concentration	1 mg/mL
Conjugation	Unconjugated
Purification	The antibody was affinity-purified from rabbit antiserum by affinity-chromatography using epitope-specific immunogen.
Dilution Range	IHC 1:100-1:300 ELISA 1:5000 IF 1:50-200
Formulation	Liquid in PBS containing 50% Glycerol, 0.5% BSA and 0.02% Sodium Azide.
Isotype	IgG
Storage Instruction	Store at -20°C for up to 1 year from the date of receipt, and avoid repeat freeze-thaw cycles.

TARGET INFORMATION

Gene ID	9551
Gene Symbol	ATP5MF
Uniprot ID	ATPK_HUMAN
Immunogen	The antiserum was produced against synthesized peptide derived from the human ATP5J2 at the amino acid range 21-70
Immunogen Region	21-70 aa
Specificity	ATP5J2 Polyclonal Antibody detects endogenous levels of ATP5J2 protein.
Immunogen Sequence	



Immunohistochemistry analysis of ATP5J2 antibody in paraffin-embedded human lung carcinoma tissue.

This product is suitable for in-vitro studies under the RESEARCH USE ONLY [RUO] licence. This product must not be used as for diagnostic or other medical purposes.
St John's Laboratory Ltd, Knowledge Dock Business Centre, University Way, London, E16 2RD | Tel: 0208 223 3081