

Anti-ATP5MC3 antibody (1-50 aa) (STJ91770)

STJ91770

GENERAL INFORMATION

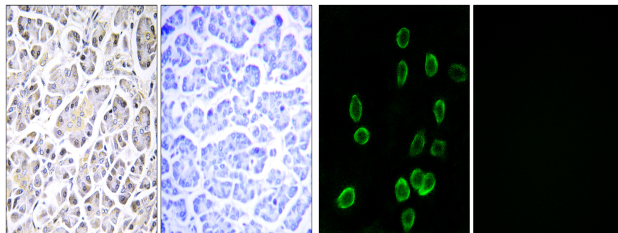
Product Type	Primary antibodies
Short Description	Rabbit polyclonal antibody anti-ATP synthase F0 complex subunit C3, mitochondrial complex subunit C3 (1-50 aa) is suitable for use in Immunohistochemistry, Immunofluorescence and ELISA research applications.
Applications	IHC/IF/ELISA
Host/Source	Rabbit
Reactivity	Human/Rat

PRODUCT PROPERTIES

Clonality	Polyclonal
Clone ID	
Concentration	1 mg/mL
Conjugation	Unconjugated
Purification	The antibody was affinity-purified from rabbit antiserum by affinity-chromatography using epitope-specific immunogen.
Dilution	IHC 1:100-1:300
Range	IF 1:200-1:1000 ELISA 1:40000
Formulation	Liquid in PBS containing 50% Glycerol, 0.5% BSA and 0.02% Sodium Azide.
Isotype	IgG
Storage	Store at -20°C for up to 1 year from the date of receipt, and avoid repeat freeze-thaw cycles.
Instruction	

TARGET INFORMATION

Gene ID	518
Gene Symbol	ATP5MC3
Uniprot ID	AT5G3_HUMAN
Immunogen	The antiserum was produced against synthesized peptide derived from the human ATP5G3 at the amino acid range 1-50
Immunogen Region	1-50 aa
Specificity	ATP5G3 Polyclonal Antibody detects endogenous levels of ATP5G3 protein.
Immunogen Sequence	



Immunohistochemistry analysis of paraffin-embedded human pancreas tissue, using ATP5G3 Antibody. The picture on the right is blocked with the synthesized peptide.

Immunofluorescence analysis of A549 cells, using ATP5G3 Antibody. The picture on the right is blocked with the synthesized peptide.

This product is suitable for in-vitro studies under the RESEARCH USE ONLY [RUO] licence. This product must not be used as for diagnostic or other medical purposes.
St John's Laboratory Ltd, Knowledge Dock Business Centre, University Way, London, E16 2RD | Tel: 0208 223 3081