

Anti-ATP5MC2 antibody (1-50 aa) (STJ91769)

STJ91769

GENERAL INFORMATION

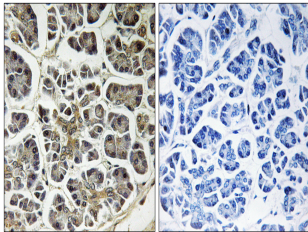
| | |
|--------------------------|---|
| Product Type | Primary antibodies |
| Short Description | Rabbit polyclonal antibody anti-ATP synthase F0 complex subunit C2, mitochondrial complex subunit C2 (1-50 aa) is suitable for use in Western Blot, Immunohistochemistry, Immunofluorescence and ELISA research applications. |
| Applications | WB/IHC/IF/ELISA |
| Host/Source | Rabbit |
| Reactivity | Human/Rat/Mouse |

PRODUCT PROPERTIES

| | |
|----------------------------|---|
| Clonality | Polyclonal |
| Clone ID | |
| Concentration | 1 mg/mL |
| Conjugation | Unconjugated |
| Purification | The antibody was affinity-purified from rabbit antiserum by affinity-chromatography using epitope-specific immunogen. |
| Dilution | WB 1:500-2000 |
| Range | IHC 1:100-1:300 ELISA 1:40000 IF 1:50-200 |
| Formulation | Liquid in PBS containing 50% Glycerol, 0.5% BSA and 0.02% Sodium Azide. |
| Isotype | IgG |
| Storage Instruction | Store at -20°C for up to 1 year from the date of receipt, and avoid repeat freeze-thaw cycles. |

TARGET INFORMATION

| | |
|---------------------------|---|
| Gene ID | 517 |
| Gene Symbol | ATP5MC2 |
| Uniprot ID | AT5G2_HUMAN |
| Immunogen | The antiserum was produced against synthesized peptide derived from the human ATP5G2 at the amino acid range 1-50 |
| Immunogen | 1-50 aa |
| Region | |
| Specificity | ATP5G2 Polyclonal Antibody detects endogenous levels of ATP5G2 protein. |
| Immunogen Sequence | |



Immunohistochemistry analysis of paraffin-embedded human pancreas, using ATP5G2 Antibody. The picture on the right is blocked with the synthesized peptide.