

Anti-ATF3 antibody (131-180 aa) (STJ91752)

STJ91752

GENERAL INFORMATION

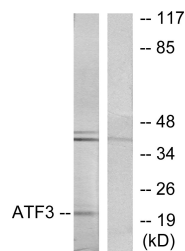
Product Type	Primary antibodies
Short Description	Rabbit polyclonal antibody anti-Cyclic AMP-dependent transcription factor ATF-3 (131-180 aa) is suitable for use in Western Blot, Immunohistochemistry, Immunofluorescence and ELISA research applications.
Applications	WB/IHC/IF/ELISA
Host/Source	Rabbit
Reactivity	Human/Mouse/Rat

PRODUCT PROPERTIES

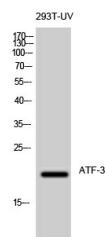
Clonality	Polyclonal
Clone ID	
Concentration	1 mg/mL
Conjugation	Unconjugated
Purification	The antibody was affinity-purified from rabbit antiserum by affinity-chromatography using epitope-specific immunogen.
Dilution	WB 1:500-2000
Range	IHC-P 1:100-500 IF ICC 1:100-500 ELISA 1:5000-20000
Formulation	Liquid in PBS containing 50% Glycerol, 0.5% BSA and 0.02% Sodium Azide.
Isotype	IgG
Storage Instruction	Store at -20°C for up to 1 year from the date of receipt, and avoid repeat freeze-thaw cycles.

TARGET INFORMATION

Gene ID	467
Gene Symbol	ATF3
Uniprot ID	ATF3_HUMAN
Immunogen	The antiserum was produced against synthesized peptide derived from the human ATF3 at the amino acid range 131-180
Immunogen Region	131-180 aa
Specificity	ATF-3 Polyclonal Antibody detects endogenous levels of ATF-3 protein.
Immunogen Sequence	



Western blot analysis of lysates from RAW264.7 cells, using ATF3 Antibody. The lane on the right is blocked with the synthesized peptide.



Western blot analysis of 293T-UV cells using ATF-3 Polyclonal Antibody diluted at 10/4500 cells nucleus extracted by Minute TM Cytoplasmic and Nuclear Fractionation kit (SC-003, Inventibiotek, MN, USA).