

Anti-ATXN2 antibody (731-780 aa) (STJ91739)

STJ91739

GENERAL INFORMATION

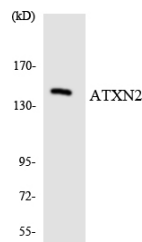
Product Type	Primary antibodies
Short Description	Rabbit polyclonal antibody anti-Ataxin-2 (731-780 aa) is suitable for use in Western Blot, Immunohistochemistry, Immunofluorescence and ELISA research applications.
Applications	WB/IHC/IF/ELISA
Host/Source	Rabbit
Reactivity	Human/Rat/Mouse

PRODUCT PROPERTIES

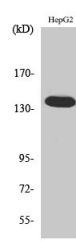
Clonality	Polyclonal
Clone ID	
Concentration	1 mg/mL
Conjugation	Unconjugated
Purification	The antibody was affinity-purified from rabbit antiserum by affinity-chromatography using epitope-specific immunogen.
Dilution Range	WB 1:500-1:2000 IHC 1:100-1:300 ELISA 1:20000 IF 1:50-200
Formulation	Liquid in PBS containing 50% Glycerol, 0.5% BSA and 0.02% Sodium Azide.
Isotype	IgG
Storage Instruction	Store at -20°C for up to 1 year from the date of receipt, and avoid repeat freeze-thaw cycles.

TARGET INFORMATION

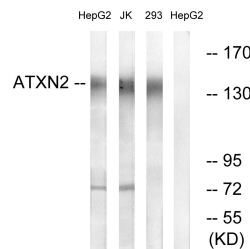
Gene ID	6311
Gene Symbol	ATXN2
Uniprot ID	ATX2_HUMAN
Immunogen	The antiserum was produced against synthesized peptide derived from the human ATXN2 at the amino acid range 731-780
Immunogen Region	731-780 aa
Specificity	Ataxin-2 Polyclonal Antibody detects endogenous levels of Ataxin-2 protein.
Immunogen Sequence	



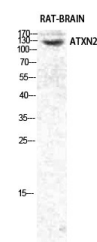
Western blot analysis of the lysates from HepG2 cells using ATXN2 antibody.



Western blot analysis of 293 cells using Ataxin-2 Polyclonal Antibody diluted at 1/1000



Western blot analysis of lysates from HepG2, Jurkat, and 293 cells, using ATXN2 Antibody. The lane on the right is blocked with the synthesized peptide.



Western blot analysis of various cells using Ataxin-2 Polyclonal Antibody diluted at 1/1000

This product is suitable for in-vitro studies under the RESEARCH USE ONLY [RUO] licence. This product must not be used as for diagnostic or other medical purposes.
St John's Laboratory Ltd, Knowledge Dock Business Centre, University Way, London, E16 2RD | Tel: 0208 223 3081