

Anti-ASF1B antibody (101-150 aa) (STJ91734)

STJ91734

GENERAL INFORMATION

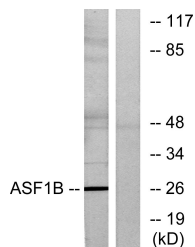
Product Type	Primary antibodies
Short Description	Rabbit polyclonal antibody anti-Histone chaperone ASF1B (101-150 aa) is suitable for use in Western Blot, Immunohistochemistry, Immunofluorescence and ELISA research applications.
Applications	WB/IHC/IF/ELISA
Host/Source	Rabbit
Reactivity	Human/Mouse/Rat

PRODUCT PROPERTIES

Clonality	Polyclonal
Clone ID	
Concentration	1 mg/mL
Conjugation	Unconjugated
Purification	The antibody was affinity-purified from rabbit antiserum by affinity-chromatography using epitope-specific immunogen.
Dilution Range	WB 1:500-1:2000 IHC 1:100-1:300 ELISA 1:5000 IF 1:50-200
Formulation	Liquid in PBS containing 50% Glycerol, 0.5% BSA and 0.02% Sodium Azide.
Isotype	IgG
Storage Instruction	Store at -20°C for up to 1 year from the date of receipt, and avoid repeat freeze-thaw cycles.

TARGET INFORMATION

Gene ID	55723
Gene Symbol	ASF1B
Uniprot ID	ASF1B_HUMAN
Immunogen	The antiserum was produced against synthesized peptide derived from the human ASF1B at the amino acid range 101-150
Immunogen Region	101-150 aa
Specificity	ASF1B Polyclonal Antibody detects endogenous levels of ASF1B protein.
Immunogen Sequence	



Western blot analysis of lysates from K562 cells, using ASF1B Antibody. The lane on the right is blocked with the synthesized peptide.