

## Anti-TRIP4 antibody (81-130 aa) (STJ91731)

STJ91731

### GENERAL INFORMATION

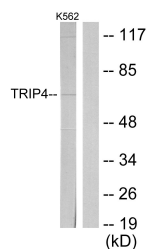
<b>Product Type</b>	Primary antibodies
<b>Short Description</b>	Rabbit polyclonal antibody anti-Activating signal cointegrator 1 (81-130 aa) is suitable for use in Western Blot, Immunohistochemistry, Immunofluorescence and ELISA research applications.
<b>Applications</b>	WB/IHC/IF/ELISA
<b>Host/Source</b>	Rabbit
<b>Reactivity</b>	Human/Mouse

### PRODUCT PROPERTIES

<b>Clonality</b>	Polyclonal
<b>Clone ID</b>	
<b>Concentration</b>	1 mg/mL
<b>Conjugation</b>	Unconjugated
<b>Purification</b>	The antibody was affinity-purified from rabbit antiserum by affinity-chromatography using epitope-specific immunogen.
<b>Dilution Range</b>	WB 1:500-1:2000 IHC 1:100-1:300 IF 1:200-1:1000 ELISA 1:10000
<b>Formulation</b>	Liquid in PBS containing 50% Glycerol, 0.5% BSA and 0.02% Sodium Azide.
<b>Isotype</b>	IgG
<b>Storage Instruction</b>	Store at -20°C for up to 1 year from the date of receipt, and avoid repeat freeze-thaw cycles.

### TARGET INFORMATION

<b>Gene ID</b>	9325
<b>Gene Symbol</b>	TRIP4
<b>Uniprot ID</b>	TRIP4_HUMAN
<b>Immunogen</b>	The antiserum was produced against synthesized peptide derived from the human TRIP4 at the amino acid range 81-130
<b>Immunogen Region</b>	81-130 aa
<b>Specificity</b>	ASC-1 Polyclonal Antibody detects endogenous levels of ASC-1 protein.
<b>Immunogen Sequence</b>	



Western blot analysis of lysates from K562 cells, using TRIP4 Antibody. The lane on the right is blocked with the synthesized peptide.