

Anti-ADRB1 antibody (281-330 aa) (STJ91724)

STJ91724

GENERAL INFORMATION

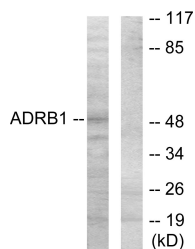
Product Type	Primary antibodies
Short Description	Rabbit polyclonal antibody anti-Beta-1 adrenergic receptor (281-330 aa) is suitable for use in Western Blot, Immunohistochemistry, Immunofluorescence and ELISA research applications.
Applications	WB/IHC/IF/ELISA
Host/Source	Rabbit
Reactivity	Human/Mouse/Rat

PRODUCT PROPERTIES

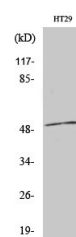
Clonality	Polyclonal
Clone ID	
Concentration	1 mg/mL
Conjugation	Unconjugated
Purification	The antibody was affinity-purified from rabbit antiserum by affinity-chromatography using epitope-specific immunogen.
Dilution Range	WB 1:500-1:2000 IHC 1:100-1:300 IF 1:200-1:1000 ELISA 1:20000
Formulation	Liquid in PBS containing 50% Glycerol, 0.5% BSA and 0.02% Sodium Azide.
Isotype	IgG
Storage Instruction	Store at -20°C for up to 1 year from the date of receipt, and avoid repeat freeze-thaw cycles.

TARGET INFORMATION

Gene ID	153
Gene Symbol	ADRB1
Uniprot ID	ADRB1_HUMAN
Immunogen	The antiserum was produced against synthesized peptide derived from the human ADRB1 at the amino acid range 281-330
Immunogen Region	281-330 aa
Specificity	AR-Beta 1 Polyclonal Antibody detects endogenous levels of AR-Beta 1 protein.
Immunogen Sequence	



Western blot analysis of lysates from HT-29 cells, using ADRB1 Antibody. The lane on the right is blocked with the synthesized peptide.



Western blot analysis of various cells using AR-Beta 1 Polyclonal Antibody