

Anti-ADRA1A antibody (136-185 aa) (STJ91719)

STJ91719

GENERAL INFORMATION

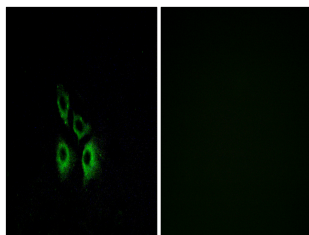
Product Type	Primary antibodies
Short Description	Rabbit polyclonal antibody anti-Alpha-1A adrenergic receptor (136-185 aa) is suitable for use in Western Blot, Immunofluorescence and ELISA research applications.
Applications	WB/IF/ELISA
Host/Source	Rabbit
Reactivity	Human/Mouse/Rat

PRODUCT PROPERTIES

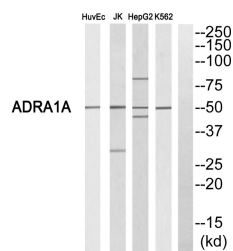
Clonality	Polyclonal
Clone ID	
Concentration	1 mg/mL
Conjugation	Unconjugated
Purification	The antibody was affinity-purified from rabbit antiserum by affinity-chromatography using epitope-specific immunogen.
Dilution Range	WB 1:500-1:2000 IF 1:200-1:1000 ELISA 1:10000
Formulation	Liquid in PBS containing 50% Glycerol, 0.5% BSA and 0.02% Sodium Azide.
Isotype	IgG
Storage Instruction	Store at -20°C for up to 1 year from the date of receipt, and avoid repeat freeze-thaw cycles.

TARGET INFORMATION

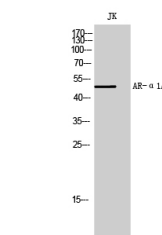
Gene ID	148
Gene Symbol	ADRA1A
Uniprot ID	ADA1A_HUMAN
Immunogen	The antiserum was produced against synthesized peptide derived from the human ADRA1A at the amino acid range 136-185
Immunogen Region	136-185 aa
Specificity	AR-Alpha 1A Polyclonal Antibody detects endogenous levels of AR-Alpha 1A protein.
Immunogen Sequence	



Immunofluorescence analysis of A549 cells, using ADRA1A Antibody. The picture on the right is blocked with the synthesized peptide.



Western blot analysis of ADRA1A Antibody. The lane on the right is blocked with the ADRA1A peptide.



Western blot analysis of JK cells using AR-Alpha 1A Polyclonal Antibody

This product is suitable for in-vitro studies under the RESEARCH USE ONLY [RUO] licence. This product must not be used as for diagnostic or other medical purposes.
St John's Laboratory Ltd, Knowledge Dock Business Centre, University Way, London, E16 2RD | Tel: 0208 223 3081