

Anti-ARSL antibody (120-200 aa) (STJ91714)

STJ91714

GENERAL INFORMATION

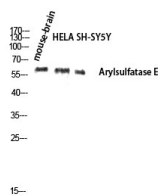
Product Type	Primary antibodies
Short Description	Rabbit polyclonal antibody anti-Arylsulfatase L (120-200 aa) is suitable for use in Western Blot and ELISA research applications.
Applications	WB/ELISA
Host/Source	Rabbit
Reactivity	Human/Rat/Mouse

PRODUCT PROPERTIES

Clonality	Polyclonal
Clone ID	
Concentration	1 mg/mL
Conjugation	Unconjugated
Purification	The antibody was affinity-purified from rabbit antiserum by affinity-chromatography using epitope-specific immunogen.
Dilution Range	WB 1:500-1:2000 ELISA 1:10000
Formulation	Liquid in PBS containing 50% Glycerol, 0.5% BSA and 0.02% Sodium Azide.
Isotype	IgG
Storage Instruction	Store at -20°C for up to 1 year from the date of receipt, and avoid repeat freeze-thaw cycles.

TARGET INFORMATION

Gene ID	415
Gene Symbol	ARSL
Uniprot ID	ARSL_HUMAN
Immunogen	Synthesized peptide derived from Arylsulfatase E at the amino acid range 120-200
Immunogen Region	120-200 aa
Specificity	Arylsulfatase E Polyclonal Antibody detects endogenous levels of Arylsulfatase E protein.
Immunogen Sequence	



Western blot analysis of mouse-brain HELA SH-SY5Y cells using Arylsulfatase E antibody. Antibody was diluted at 1:1000.