

Anti-ARR3 antibody (339-388 aa) (STJ91707)

STJ91707

GENERAL INFORMATION

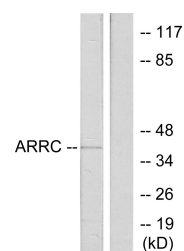
Product Type	Primary antibodies
Short Description	Rabbit polyclonal antibody anti-Arrestin-C (339-388 aa) is suitable for use in Western Blot, Immunohistochemistry, Immunofluorescence and ELISA research applications.
Applications	WB/IHC/IF/ELISA
Host/Source	Rabbit
Reactivity	Human/Rat/Mouse

PRODUCT PROPERTIES

Clonality	Polyclonal
Clone ID	
Concentration	1 mg/mL
Conjugation	Unconjugated
Purification	The antibody was affinity-purified from rabbit antiserum by affinity-chromatography using epitope-specific immunogen.
Dilution Range	WB 1:500-1:2000 IHC 1:100-1:300 IF 1:200-1:1000 ELISA 1:5000
Formulation	Liquid in PBS containing 50% Glycerol, 0.5% BSA and 0.02% Sodium Azide.
Isotype	IgG
Storage Instruction	Store at -20°C for up to 1 year from the date of receipt, and avoid repeat freeze-thaw cycles.

TARGET INFORMATION

Gene ID	407
Gene Symbol	ARR3
Uniprot ID	ARRC_HUMAN
Immunogen	The antiserum was produced against synthesized peptide derived from the human ARRC at the amino acid range 339-388
Immunogen Region	339-388 aa
Specificity	Arrestin-C Polyclonal Antibody detects endogenous levels of Arrestin-C protein.
Immunogen Sequence	



Western blot analysis of lysates from LOVO cells, using ARRC Antibody. The lane on the right is blocked with the synthesized peptide.