

Anti-ARRDC4 antibody (127-176 aa) (STJ91706)

STJ91706

GENERAL INFORMATION

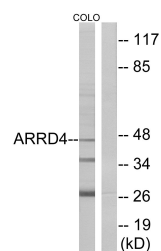
| | |
|--------------------------|--|
| Product Type | Primary antibodies |
| Short Description | Rabbit polyclonal antibody anti-Arrestin domain-containing protein 4 (127-176 aa) is suitable for use in Western Blot, Immunohistochemistry, Immunofluorescence and ELISA research applications. |
| Applications | WB/IHC/IF/ELISA |
| Host/Source | Rabbit |
| Reactivity | Human/Rat/Mouse |

PRODUCT PROPERTIES

| | |
|----------------------------|---|
| Clonality | Polyclonal |
| Clone ID | |
| Concentration | 1 mg/mL |
| Conjugation | Unconjugated |
| Purification | The antibody was affinity-purified from rabbit antiserum by affinity-chromatography using epitope-specific immunogen. |
| Dilution Range | WB 1:500-1:2000 IHC 1:100-1:300 ELISA 1:20000 IF 1:50-200 |
| Formulation | Liquid in PBS containing 50% Glycerol, 0.5% BSA and 0.02% Sodium Azide. |
| Isotype | IgG |
| Storage Instruction | Store at -20°C for up to 1 year from the date of receipt, and avoid repeat freeze-thaw cycles. |

TARGET INFORMATION

| | |
|---------------------------|--|
| Gene ID | 91947 |
| Gene Symbol | ARRDC4 |
| Uniprot ID | ARRD4_HUMAN |
| Immunogen | The antiserum was produced against synthesized peptide derived from the human ARRDC4 at the amino acid range 127-176 |
| Immunogen Region | 127-176 aa |
| Specificity | Arrdc4 Polyclonal Antibody detects endogenous levels of Arrdc4 protein. |
| Immunogen Sequence | |



Western blot analysis of lysates from COLO cells, using ARRDC4 Antibody. The lane on the right is blocked with the synthesized peptide.